

WORLD GRAIN NETWORK

Supplementary material to the worldwide inter-laboratory study conducted in February/March 2022

Contents

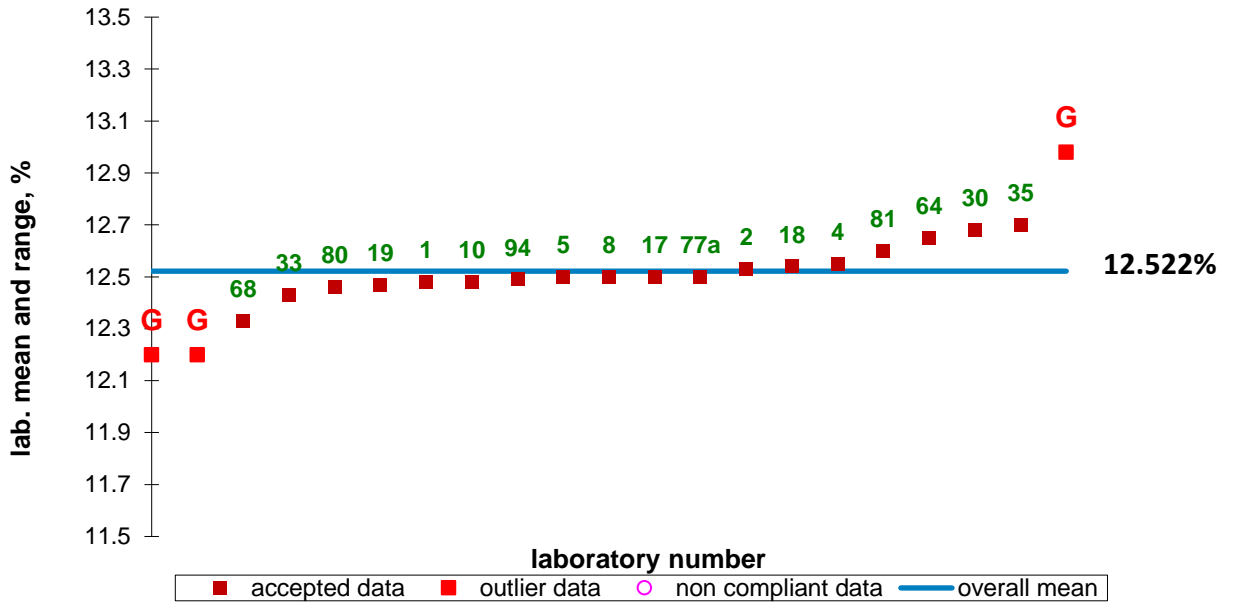
1	Introductory remarks	2
2	Protein in Wheat & Barley by reference methods	3
3	Moisture in Wheat & Barley by reference methods	13
4	Protein in Wheat & Barley by local NIR prediction models.....	23
5	Moisture in Wheat & Barley by local NIR prediction models	24
6	Protein in Wheat & Barley by ANN model WB003034.....	25
7	Moisture in Wheat & Barley by ANN model WB003034	26
8	Oil in Rapeseed by reference methods	27
9	Moisture in Rapeseed by reference methods.....	32
10	Oil in Rapeseed by local NIR prediction models.....	37
11	Moisture in Rapeseed by local NIR prediction models	38
12	Oil in Rapeseed by ANN model RAOI0035	39
13	Moisture in Rapeseed by ANN model RAMO0026.....	40

1 Introductory remarks

The World Grain Network Ring test has grown to the extent where it is necessary to collect a substantial part of the results in a supplementary material document. The statistical evaluation of each individual sample for the main parameters with graphs are therefore presented in the subsequent chapters. This material comprises protein and moisture in Wheat and Barley as well as oil and moisture in Rapeseed. All samples for reference results are shown whereas selected examples of predicted results from local and ANN models are presented.

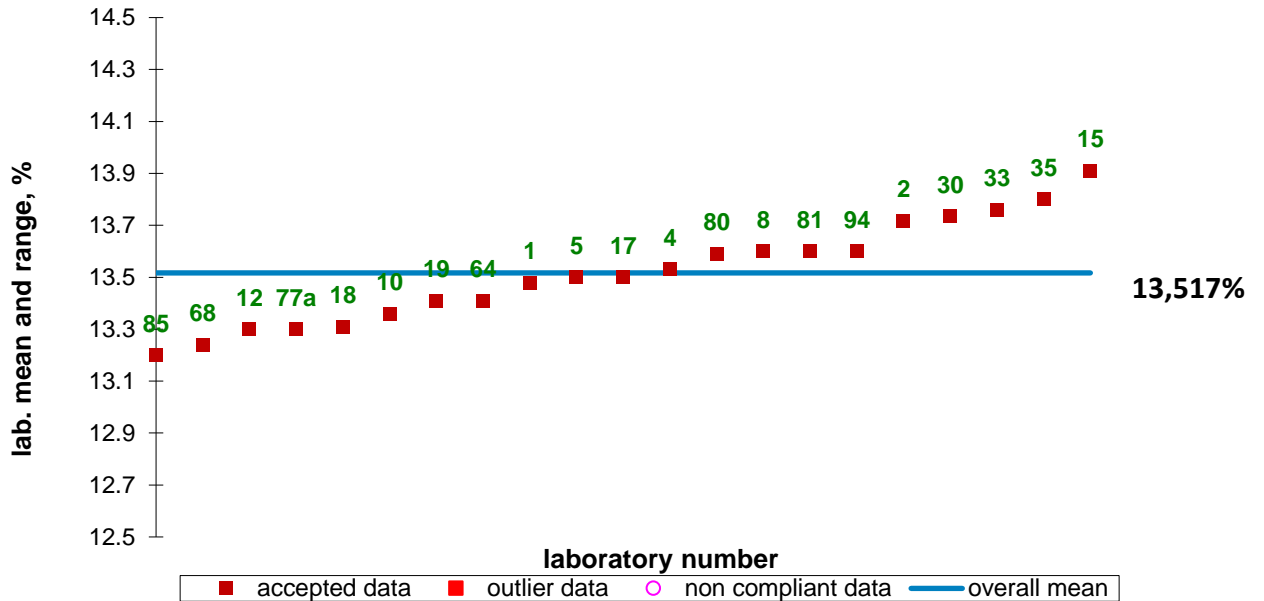
2 Protein in Wheat & Barley by reference methods

WGN 2022, protein, sample W1, reference



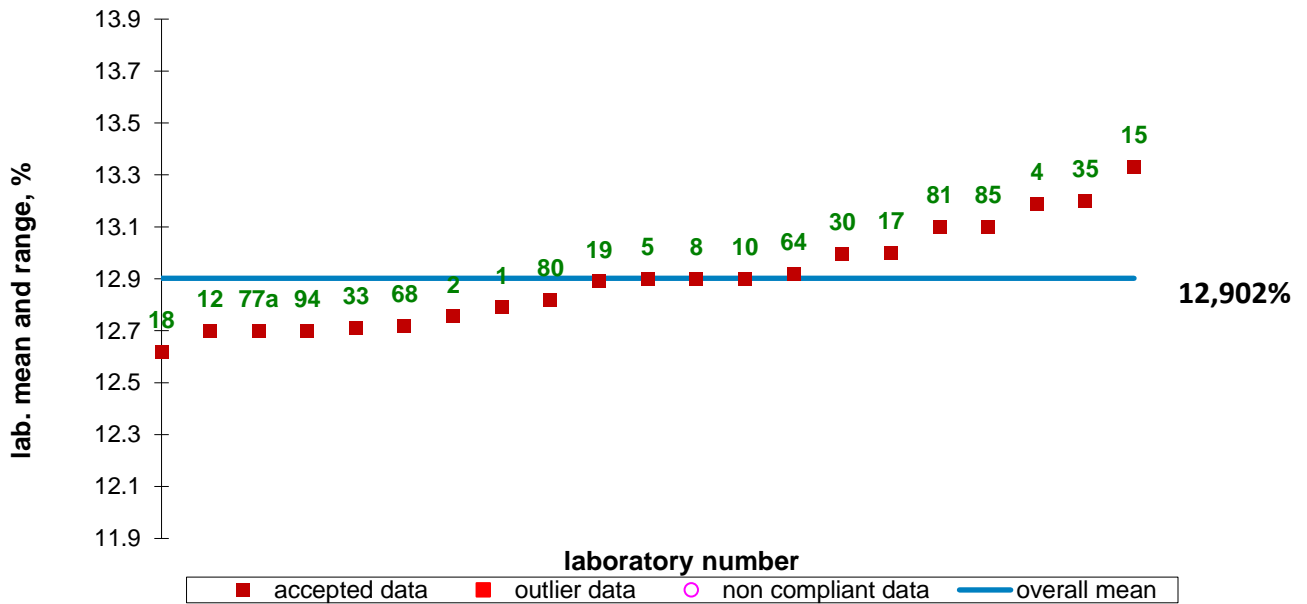
Outliers 12, 15 and 85.

WGN 2022, protein, sample W2, reference



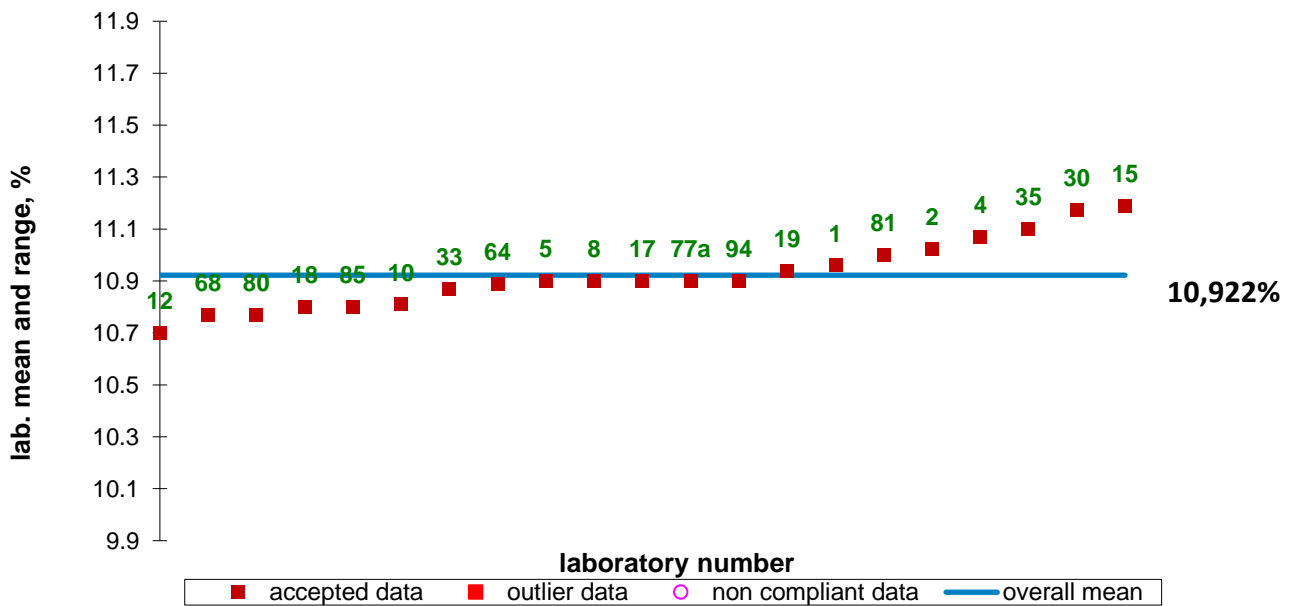
No outliers.

WGN 2022, protein, sample W3, reference



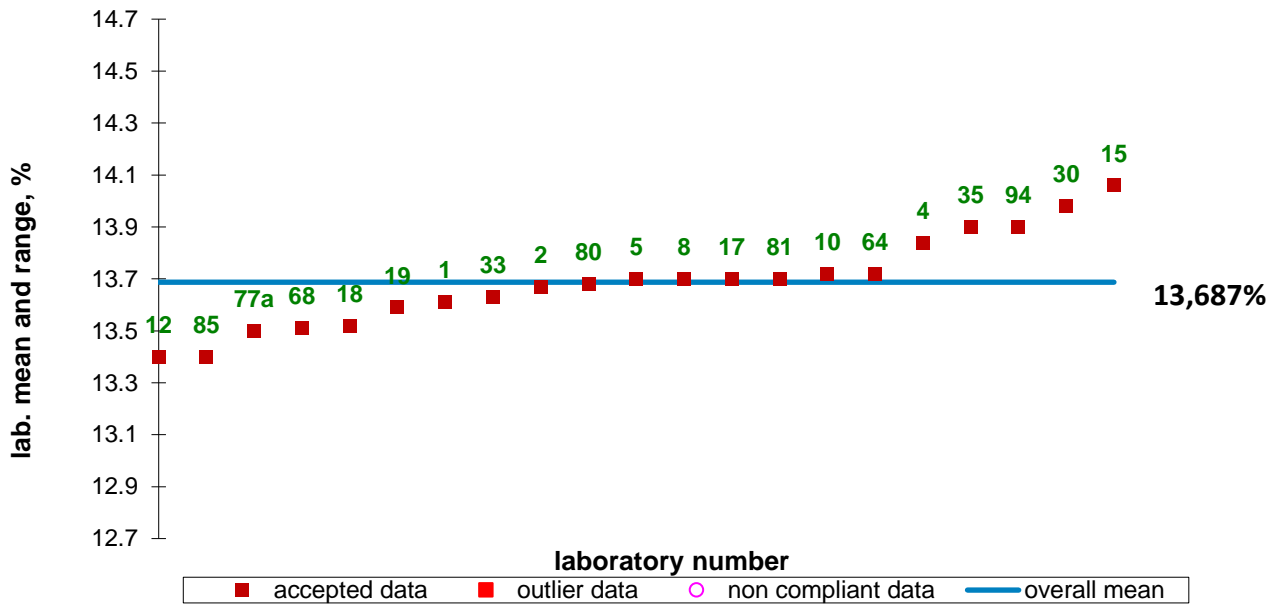
No outliers.

WGN 2022, protein, sample W4, reference



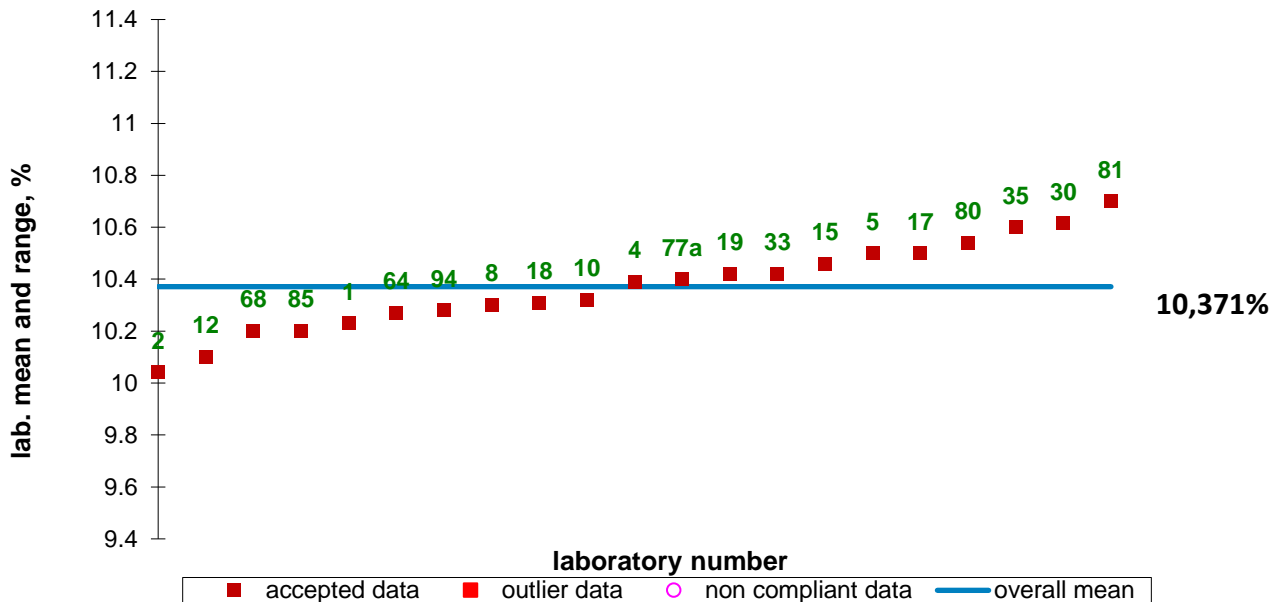
No outliers.

WGN 2022, protein, sample W5, reference



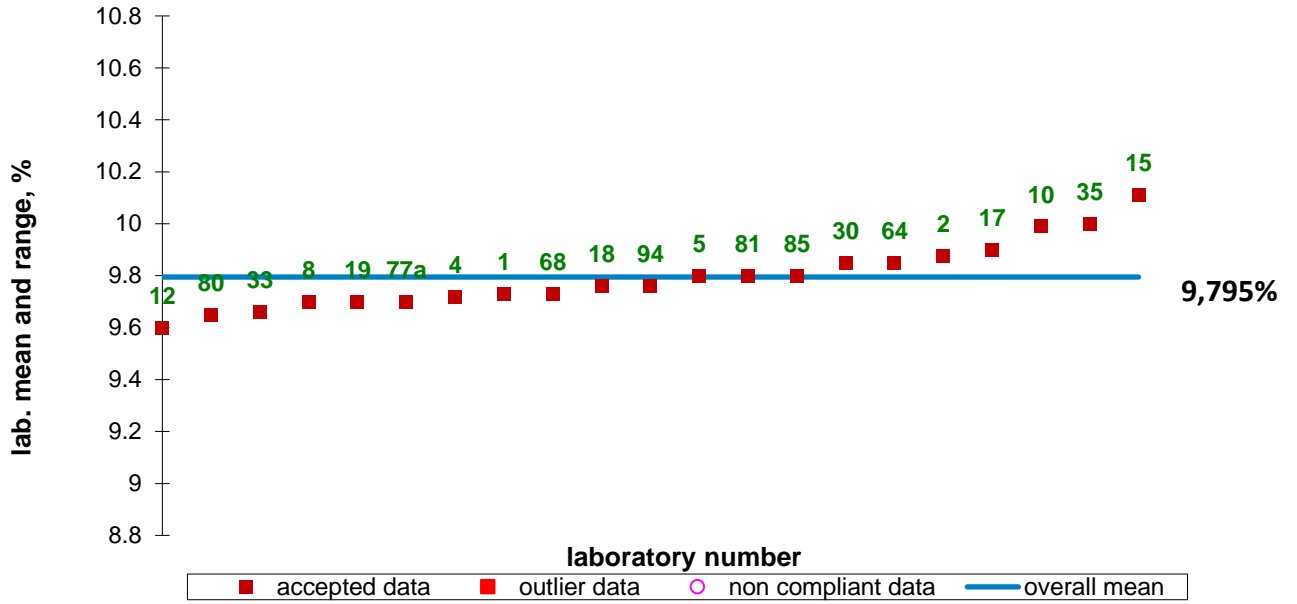
No outliers.

WGN 2022, protein, sample W6, reference



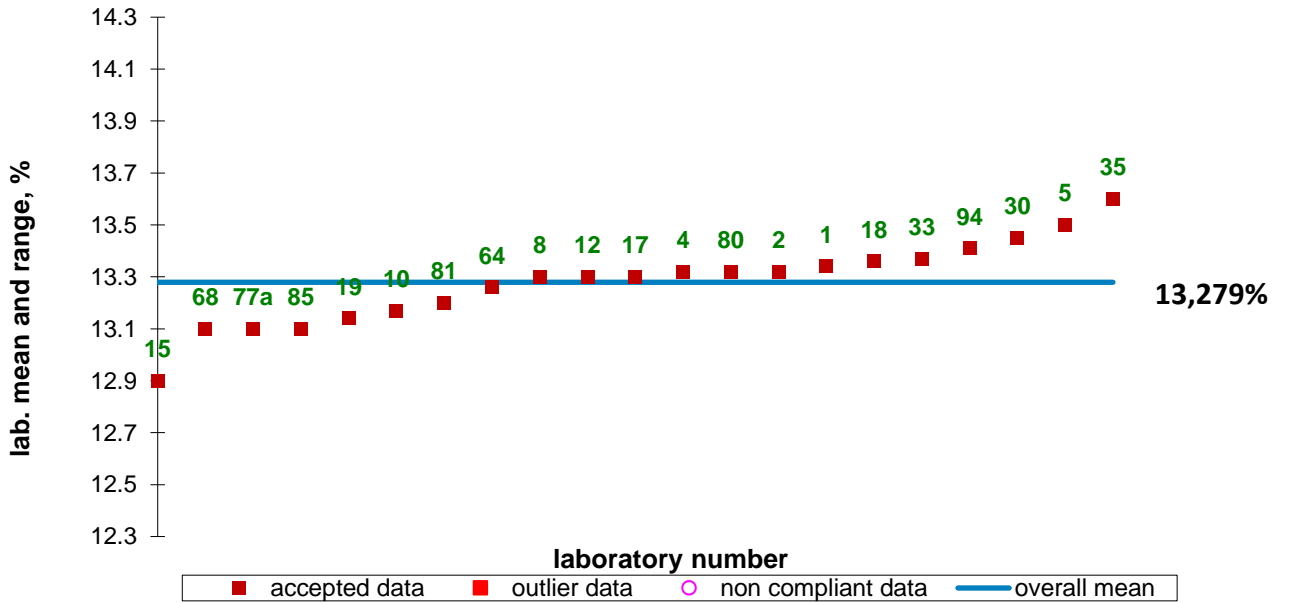
No outliers.

WGN 2022, protein, sample W7, reference



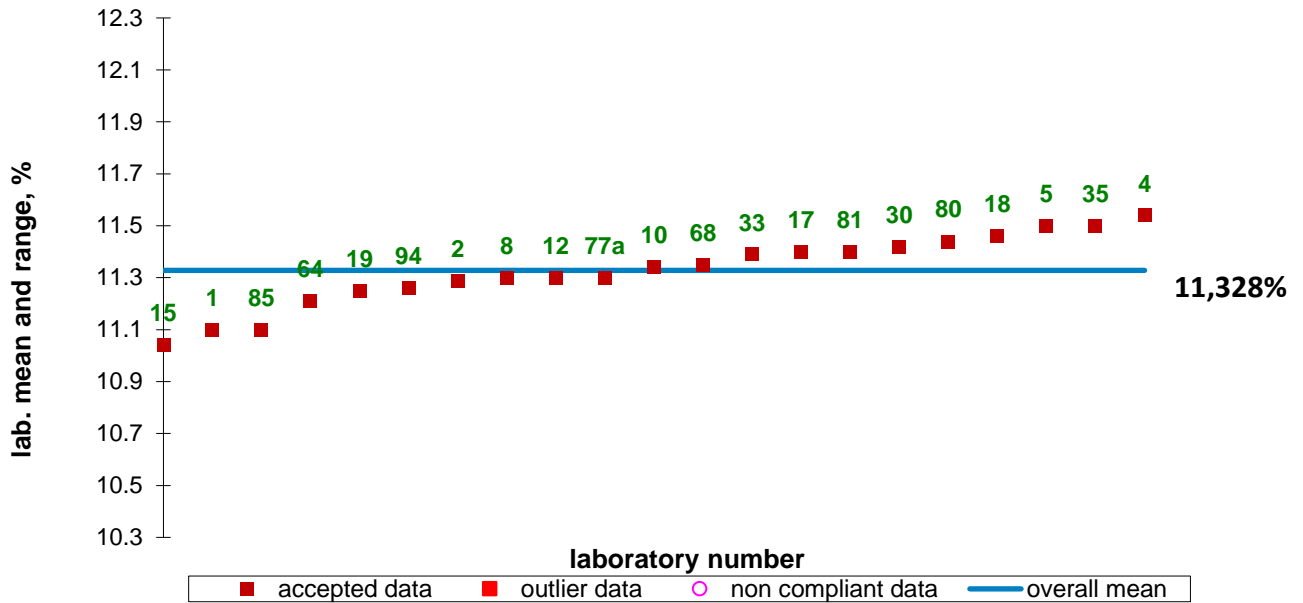
No outliers.

WGN 2022, protein, sample W8, reference



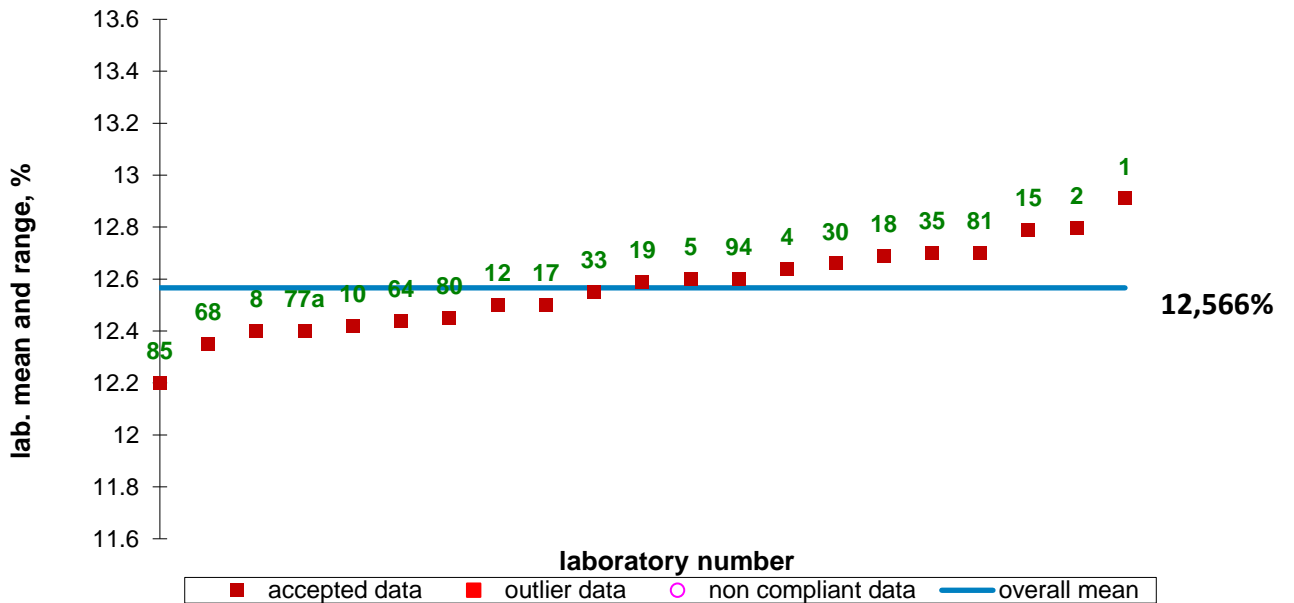
No outliers.

WGN 2022, protein, sample W9, reference



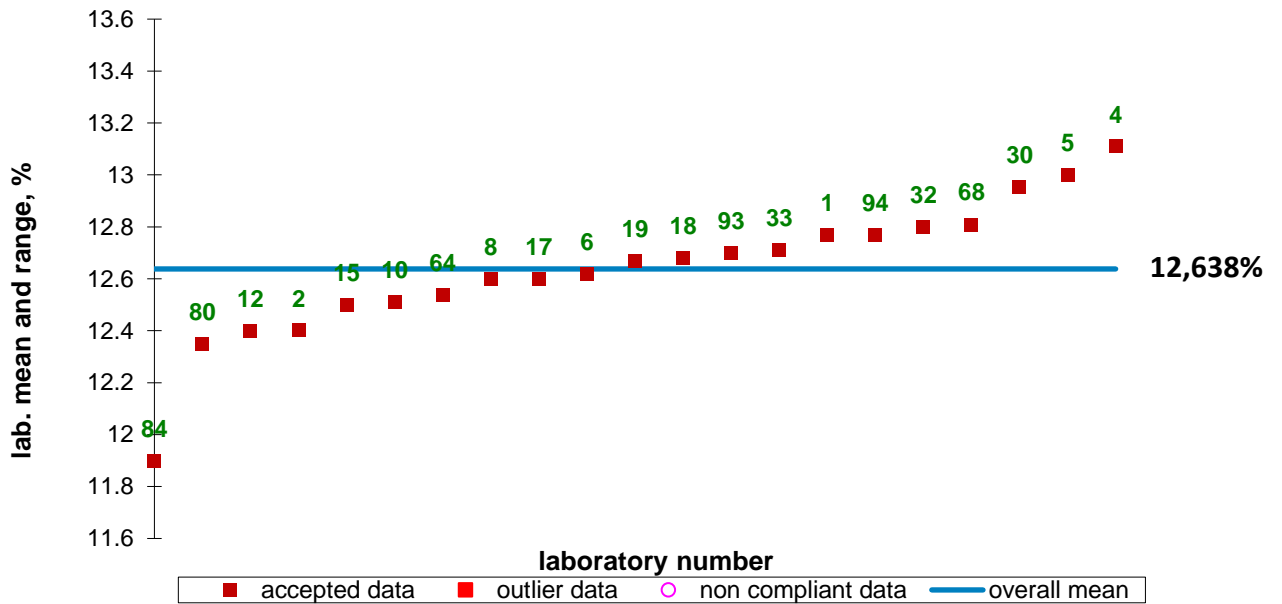
No outliers.

WGN 2022, protein, sample W10, reference



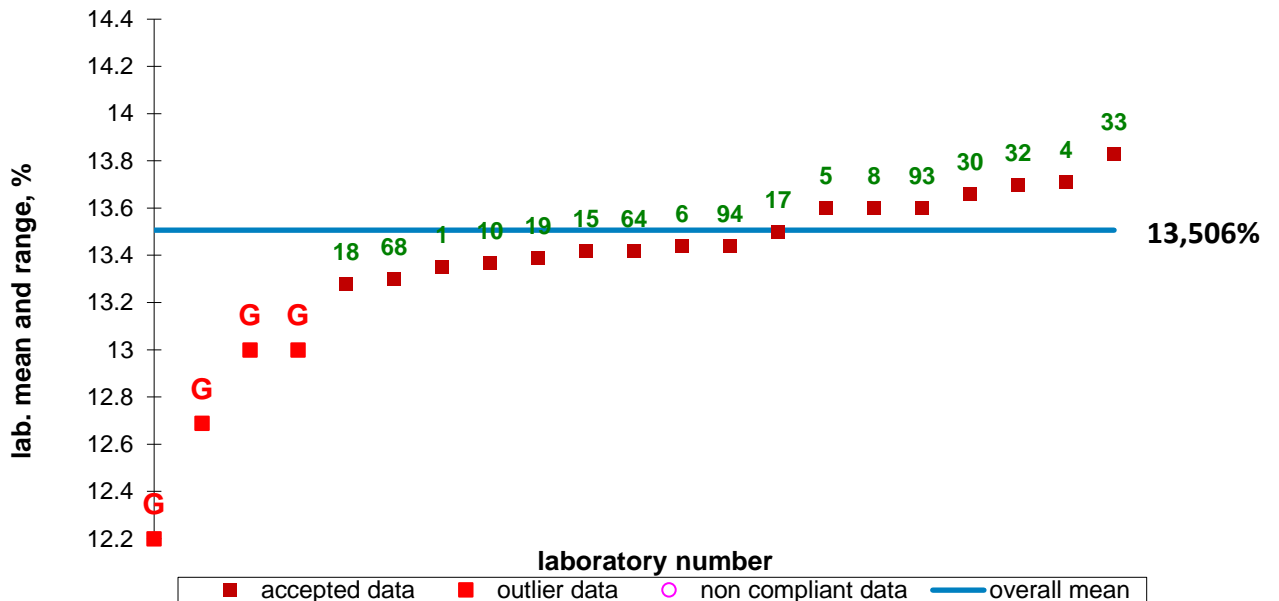
No outlier.

WGN 2022, protein, sample B1, reference

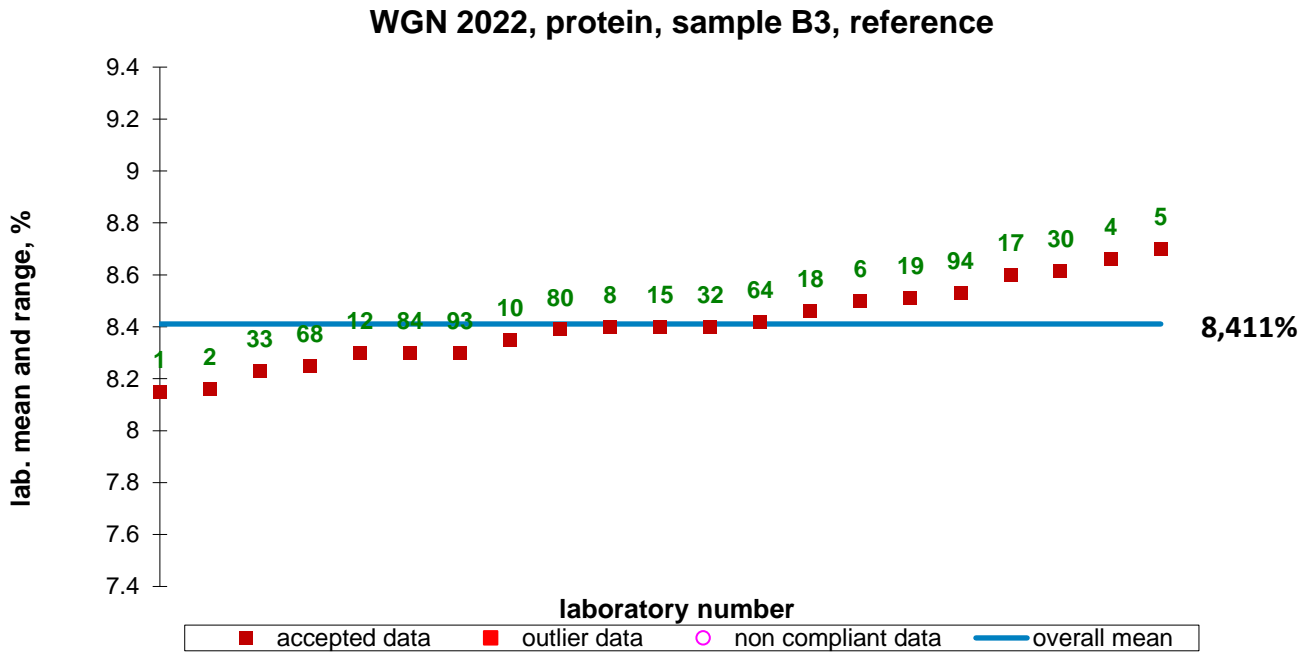


No outliers.

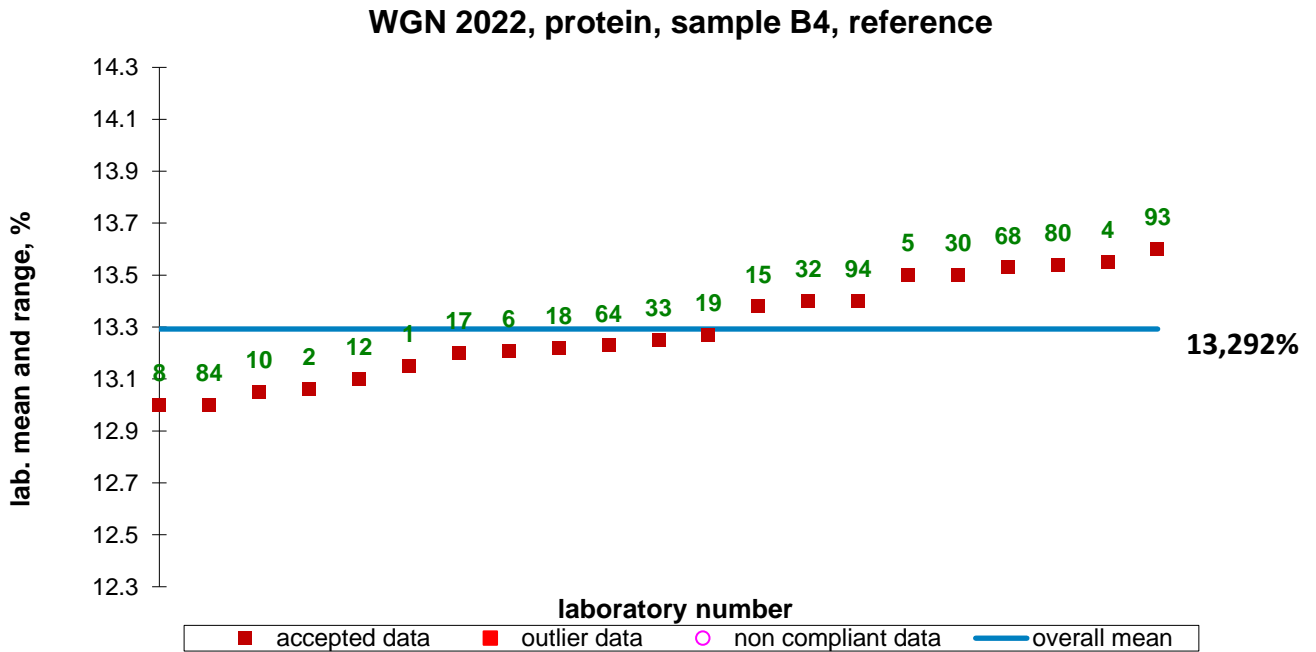
WGN 2022, protein, sample B2, reference



Outliers 2, 12, 80 and 84.

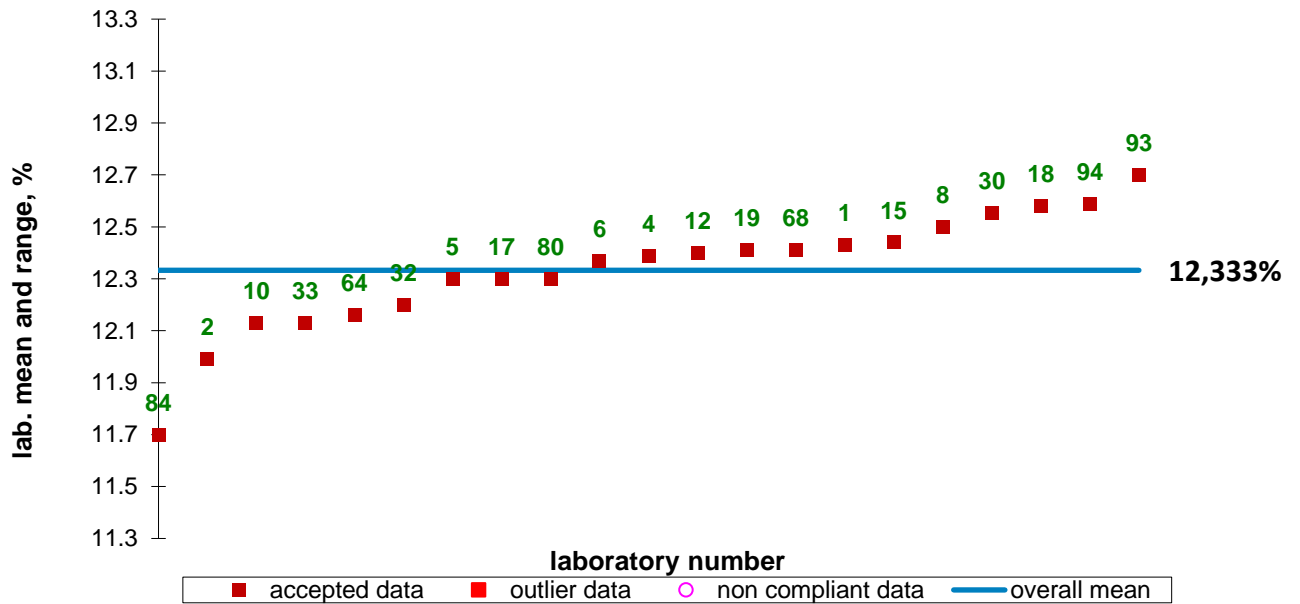


No outliers.



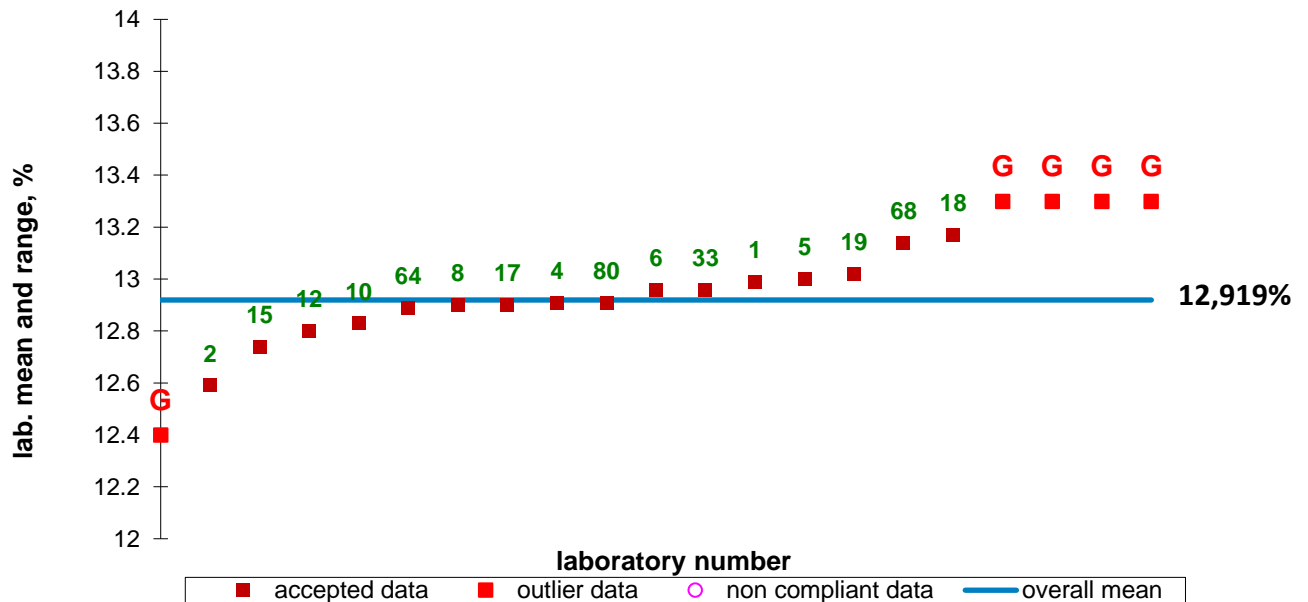
No outliers.

WGN 2022, protein, sample B5, reference

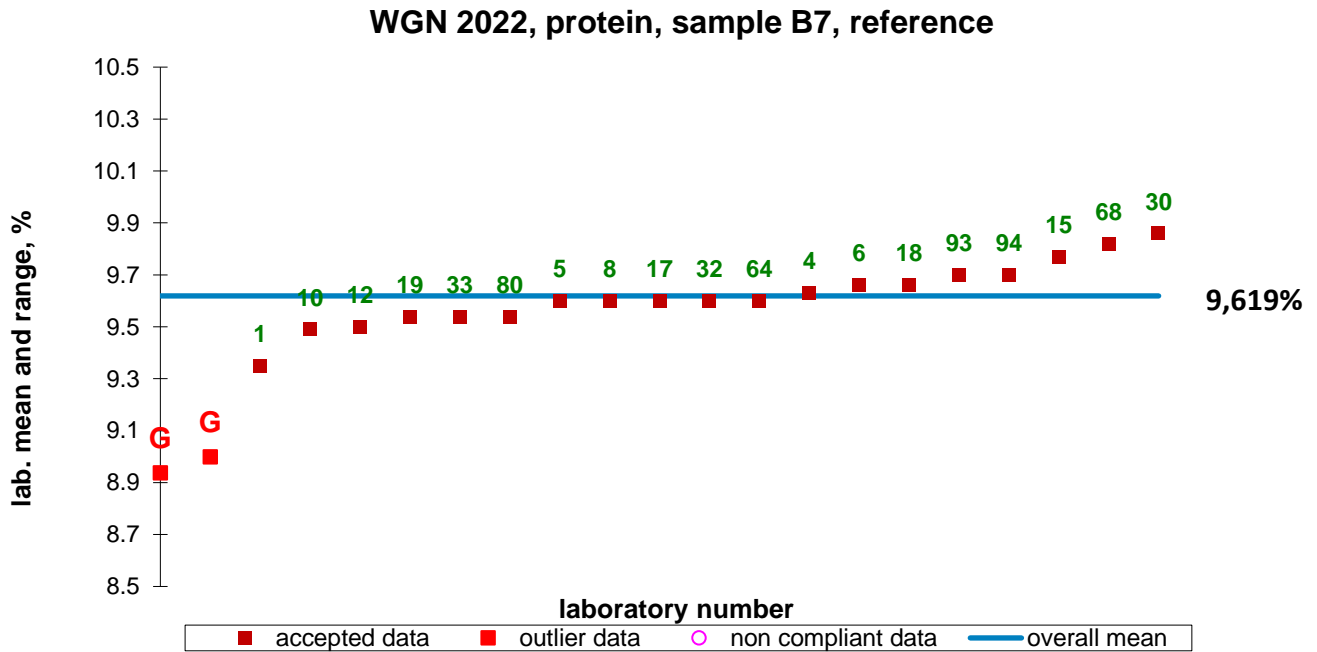


No outliers.

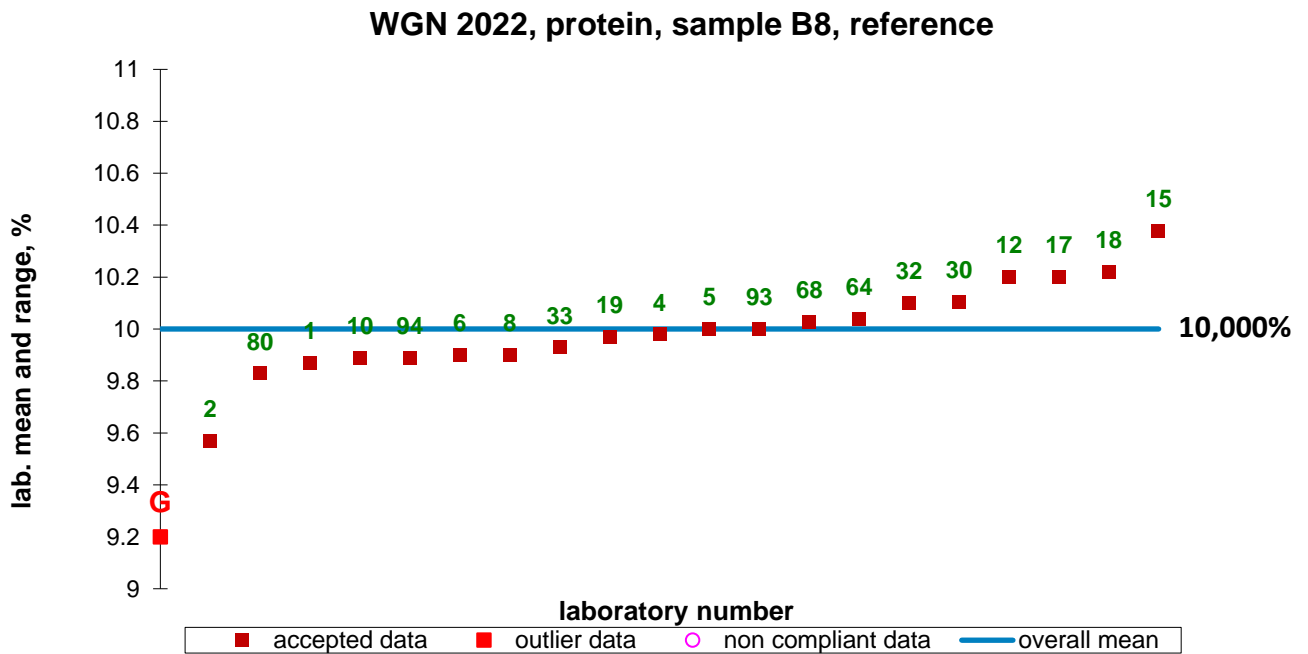
WGN 2022, protein, sample B6, reference



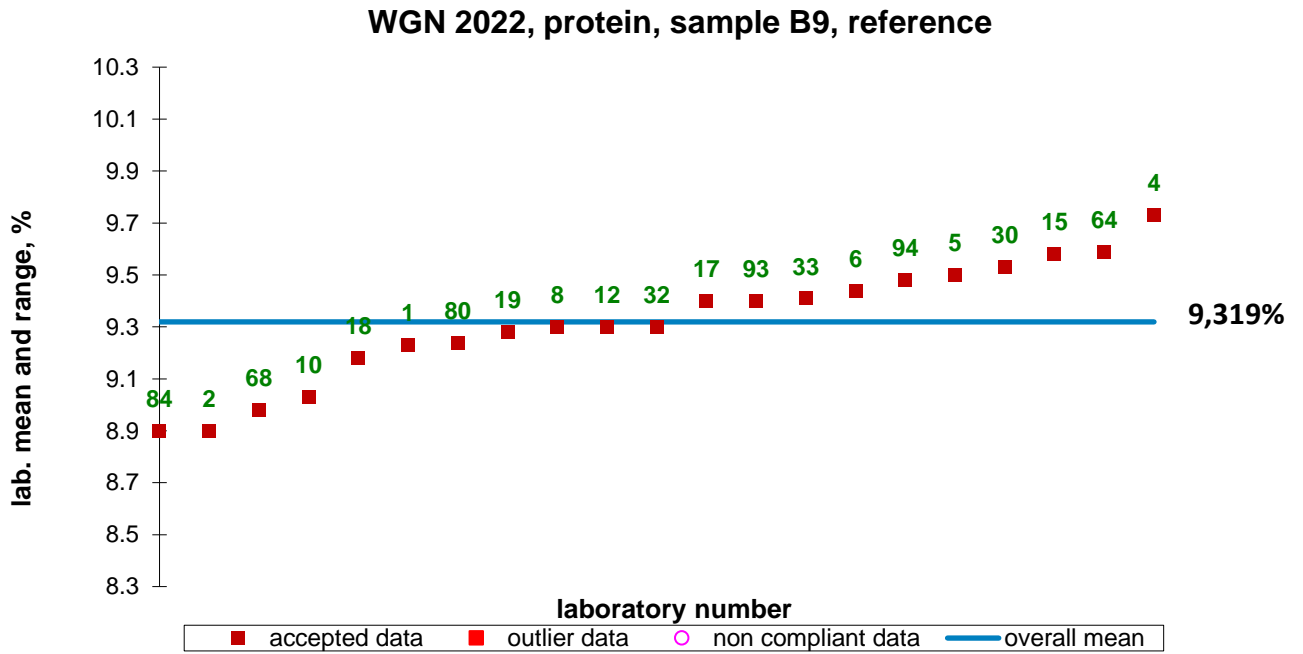
Outliers 30, 32, 84, 93 and 94.



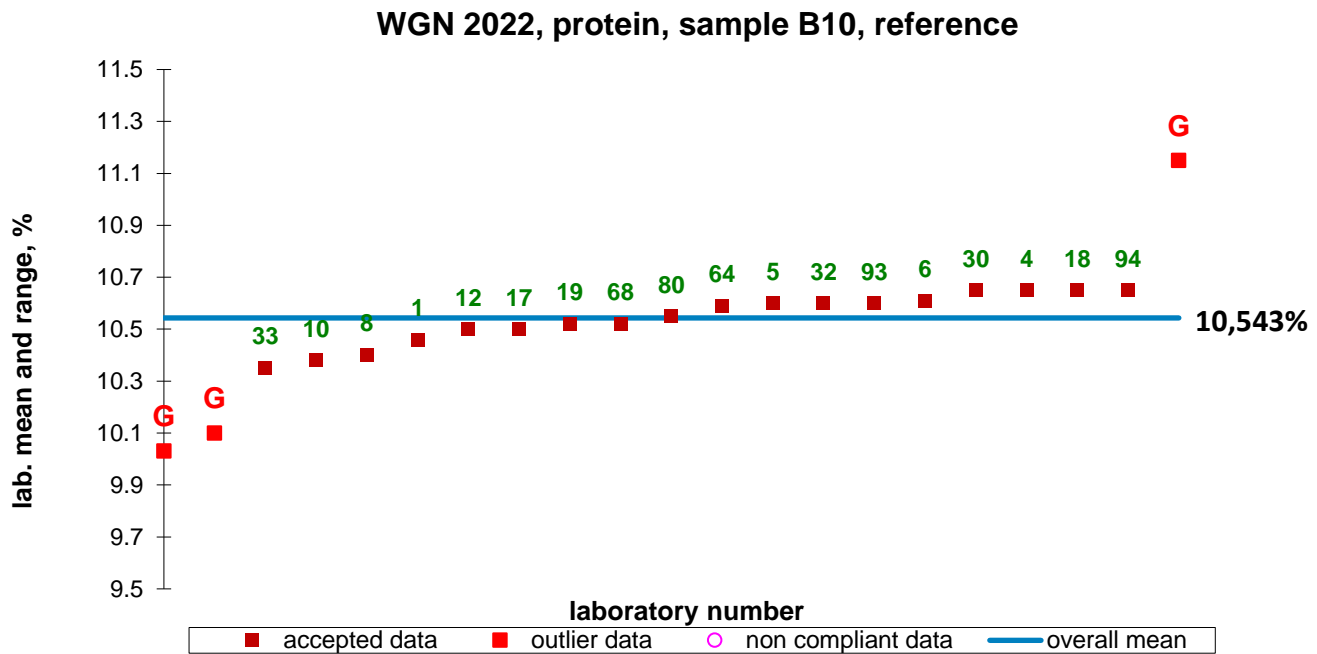
Outliers 2 and 84.



Outlier 84.



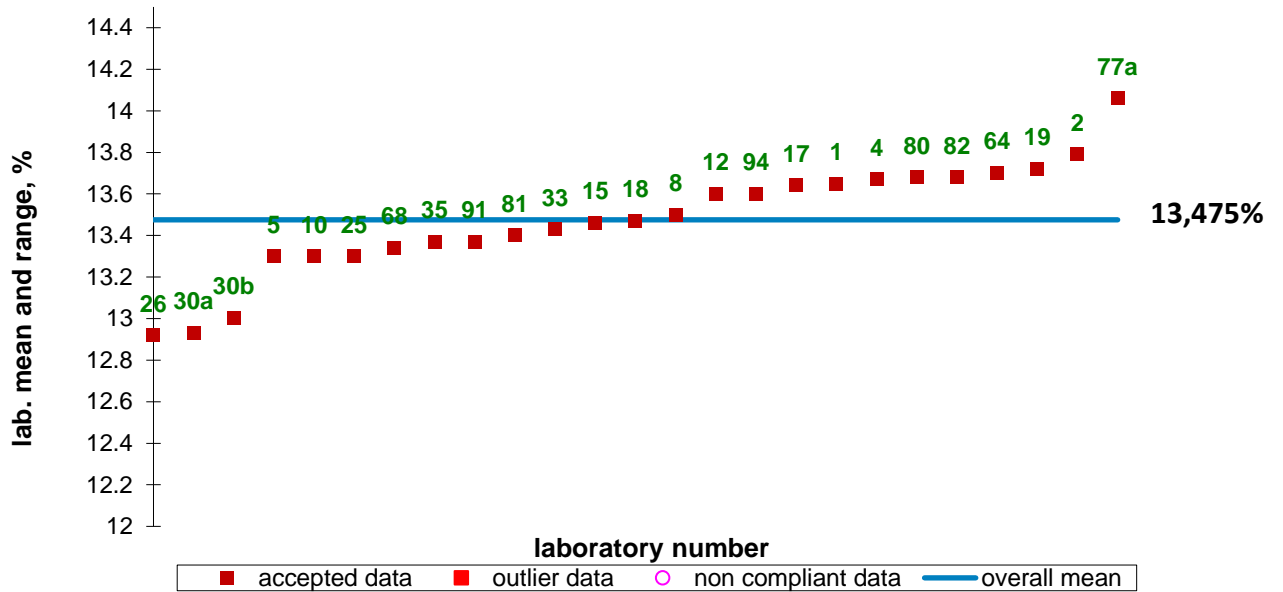
No outliers.



Outliers 2, 15 and 84.

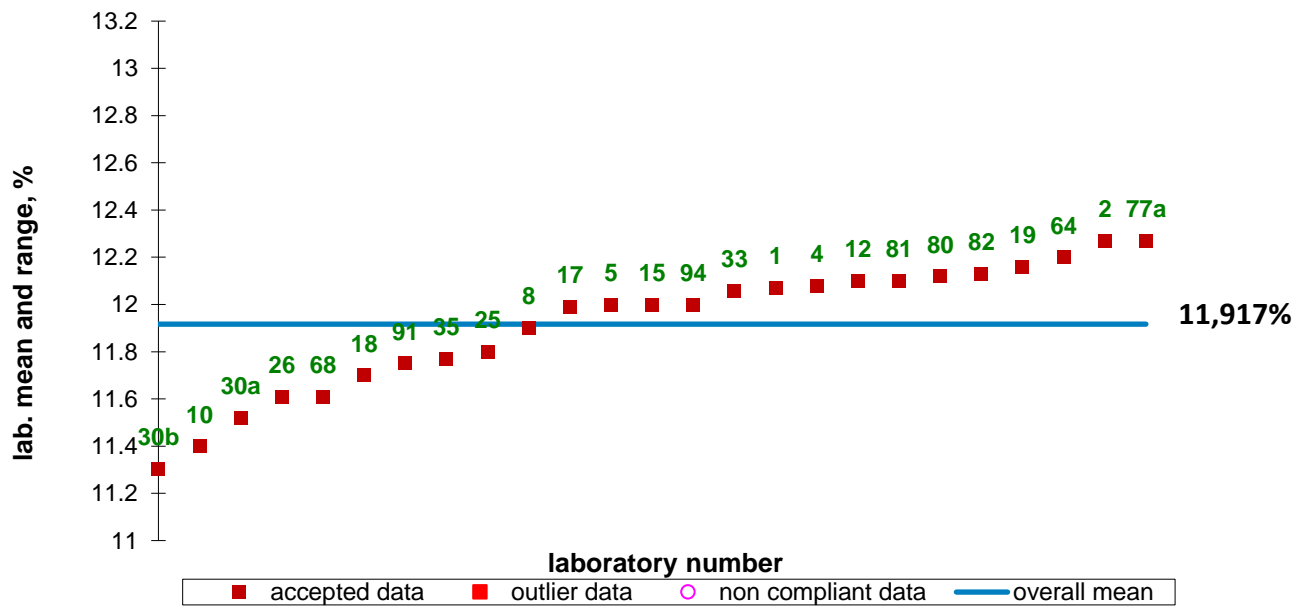
3 Moisture in Wheat & Barley by reference methods

WGN 2022, moisture, sample W1, reference

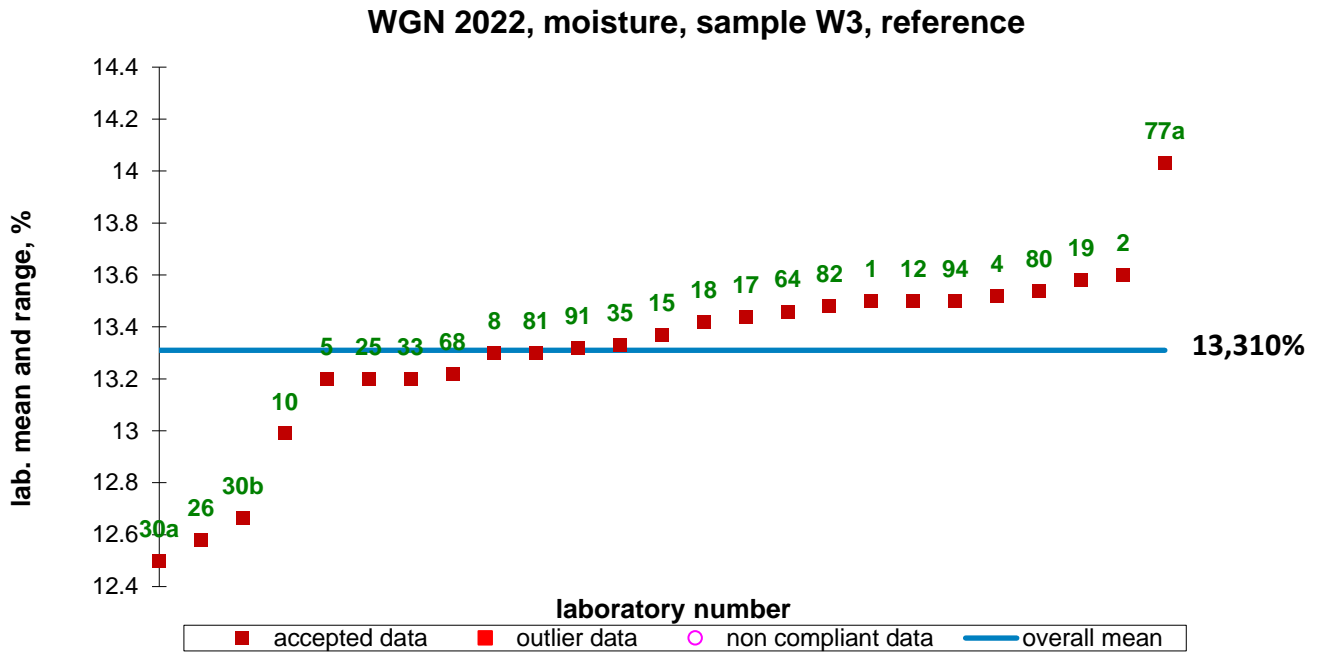


No outliers.

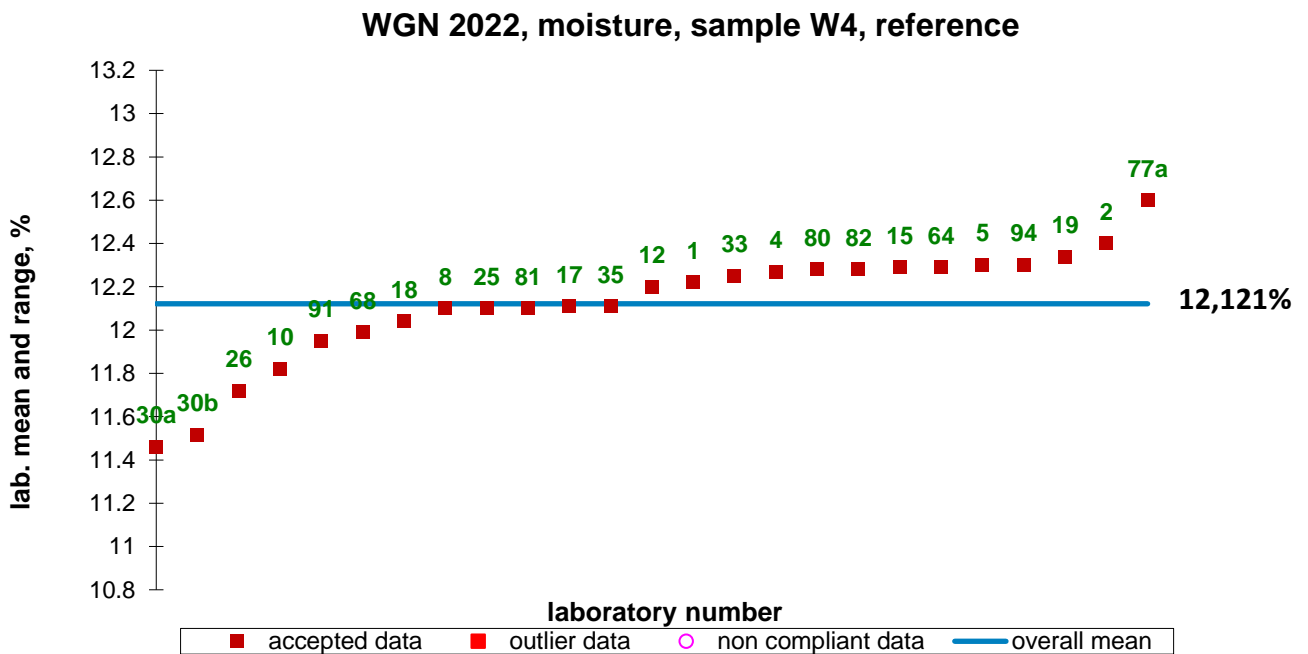
WGN 2022, moisture, sample W2, reference



No outliers.

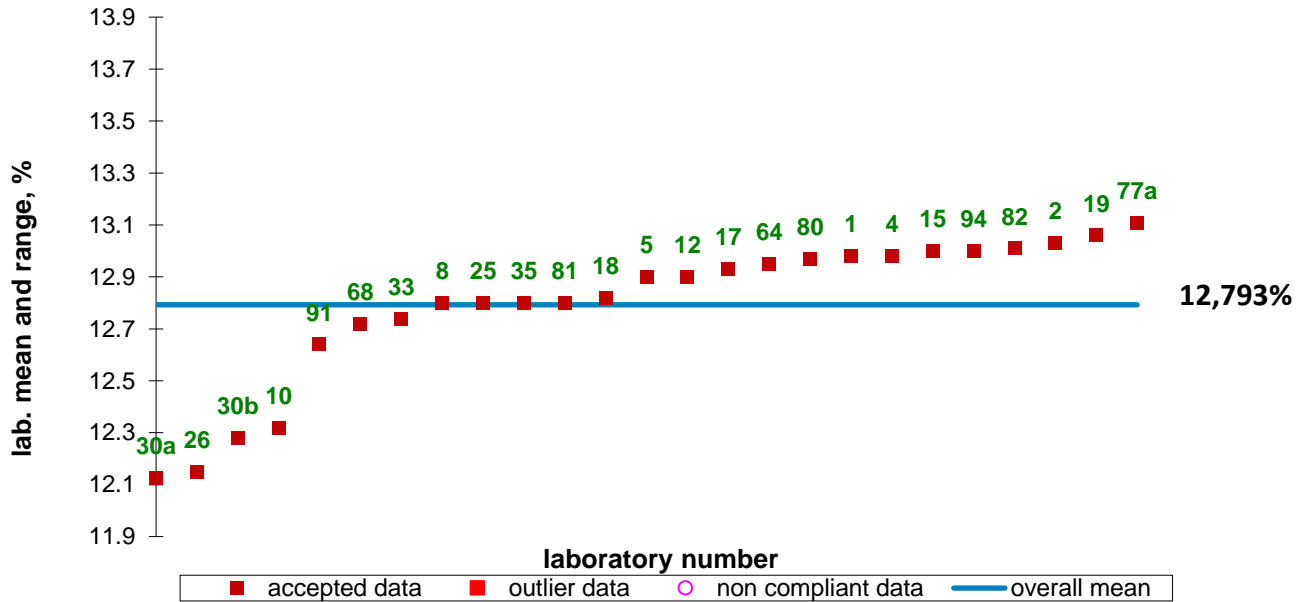


No outliers.



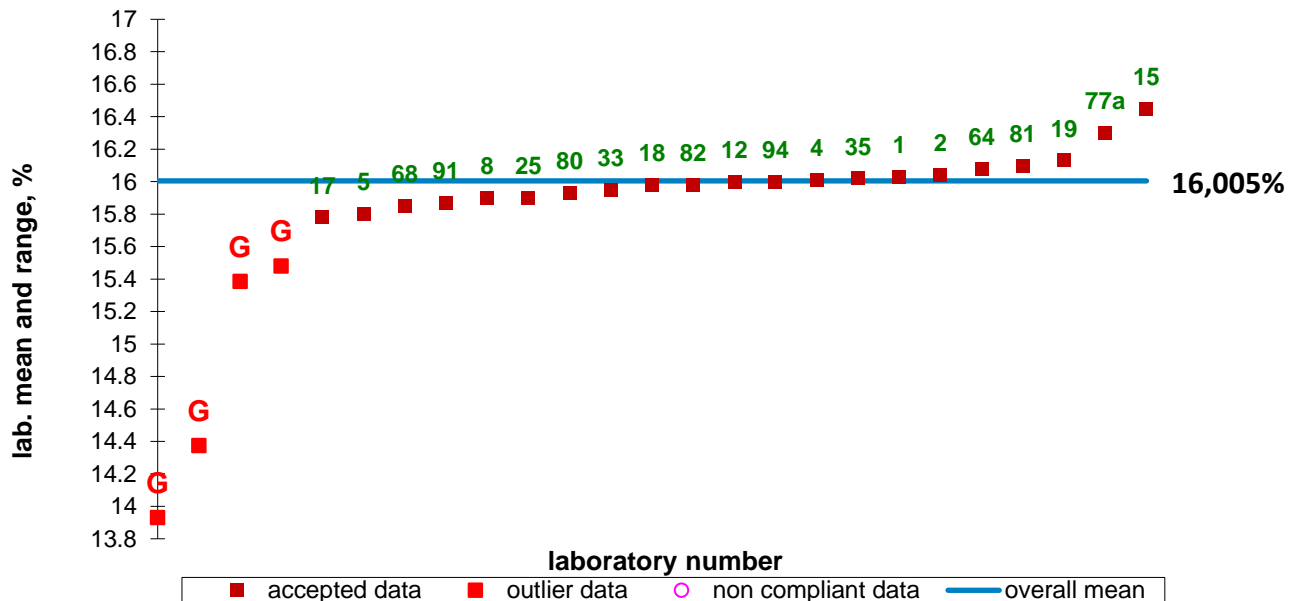
No outliers.

WGN 2022, moisture, sample W5, reference

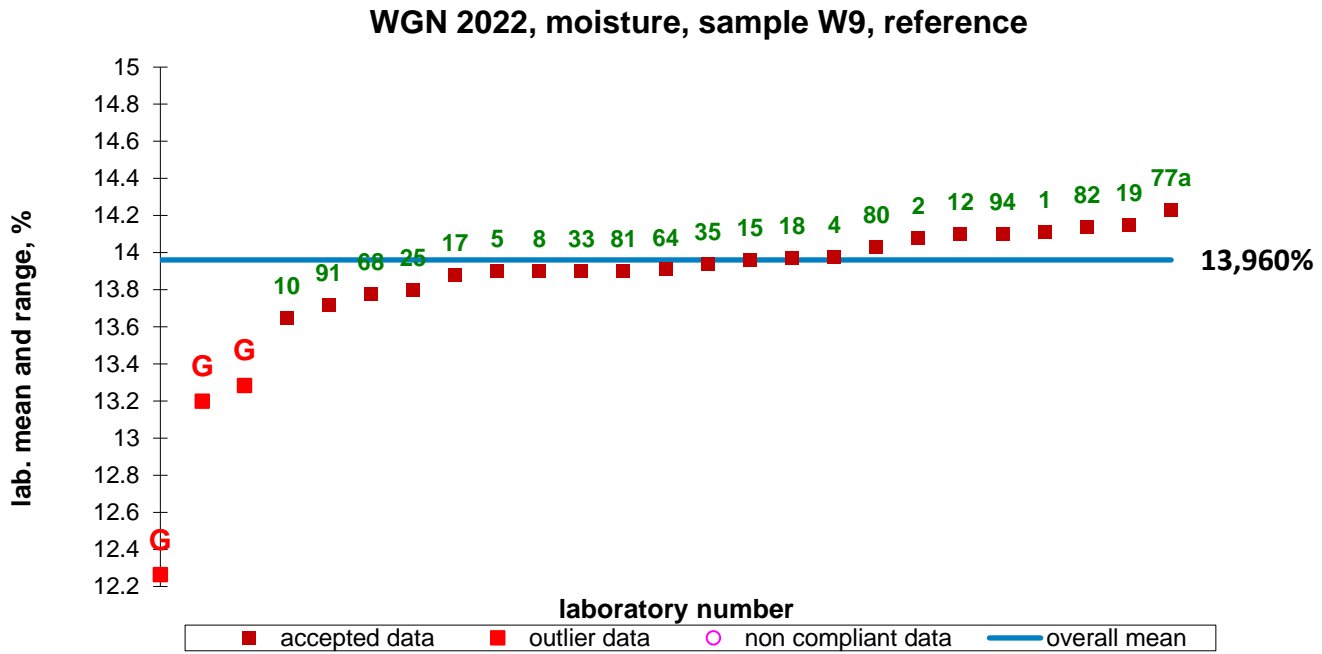


No outliers.

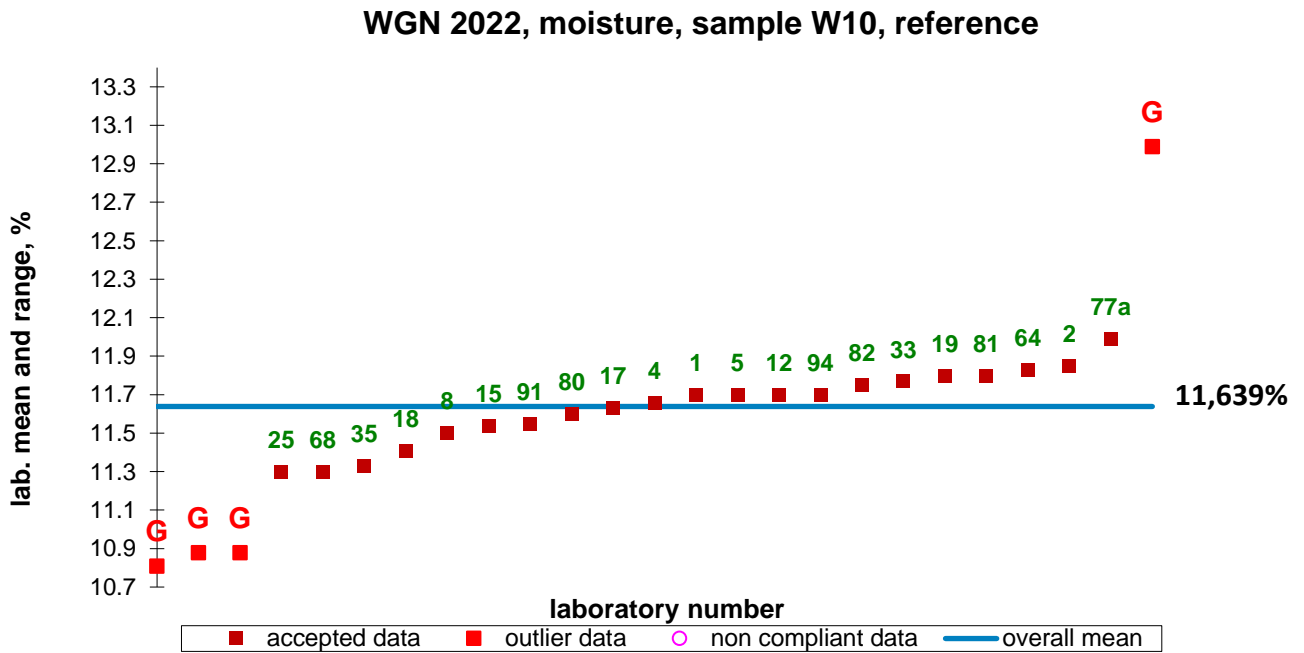
WGN 2022, moisture, sample W6, reference



Outliers 10, 26, 30 and 30b.

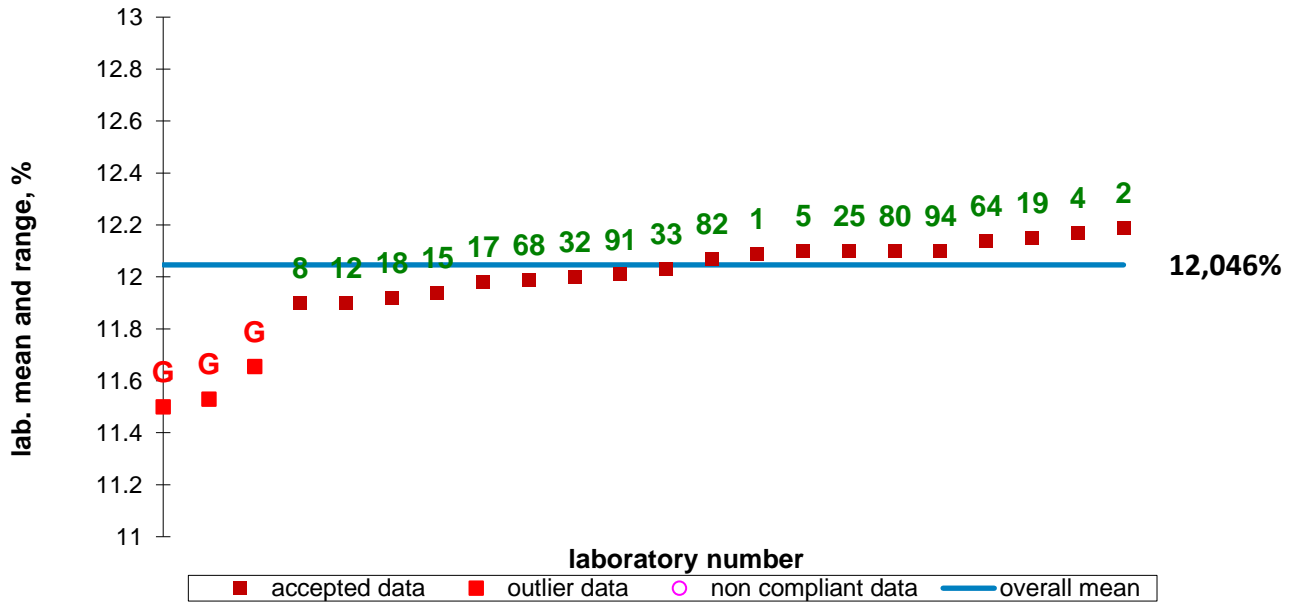


Outliers 26, 30a and 30b.



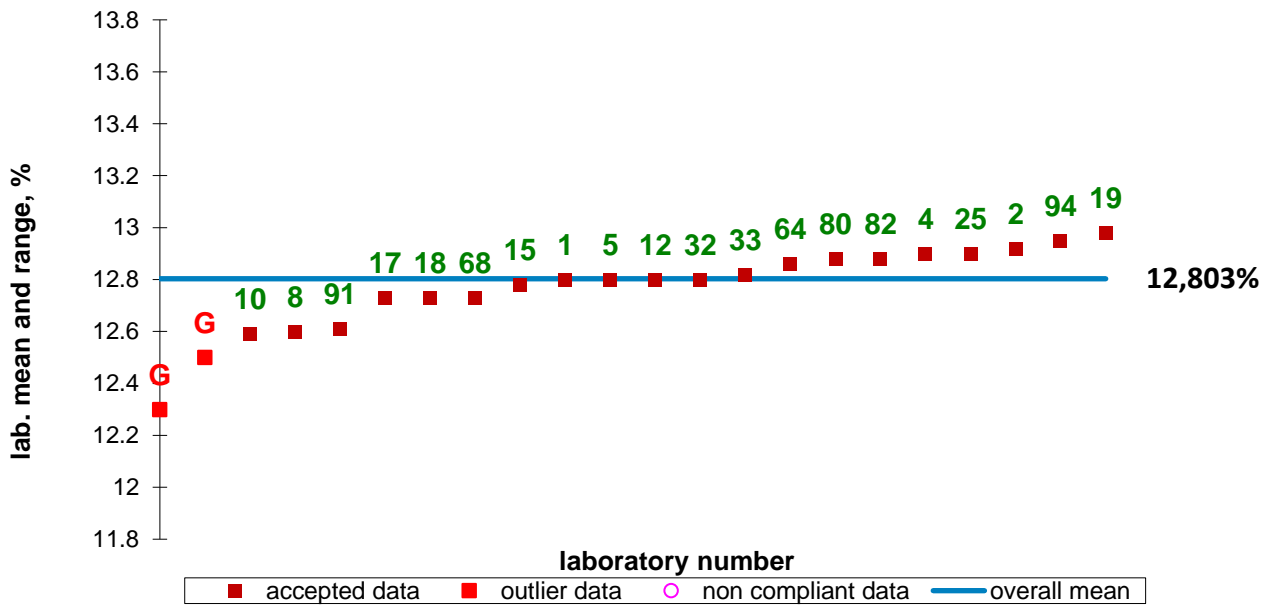
Outliers 10, 26, 30a and 30b.

WGN 2022, moisture, sample B1, reference



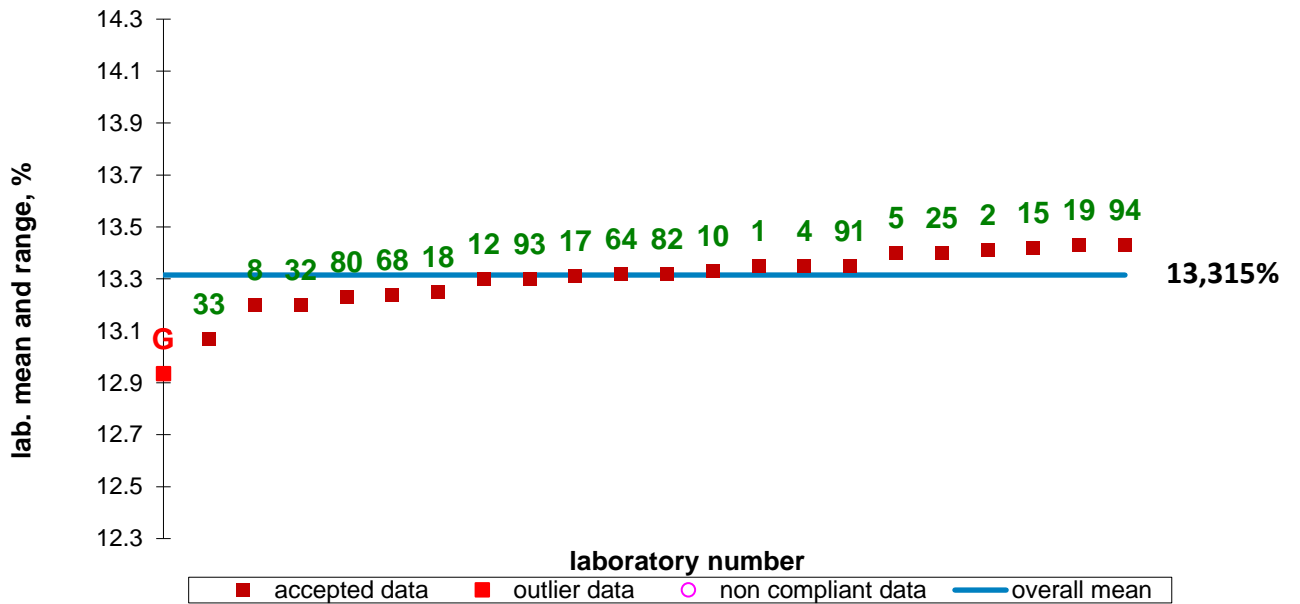
Outliers 10, 30a and 93.

WGN 2022, moisture, sample B2, reference



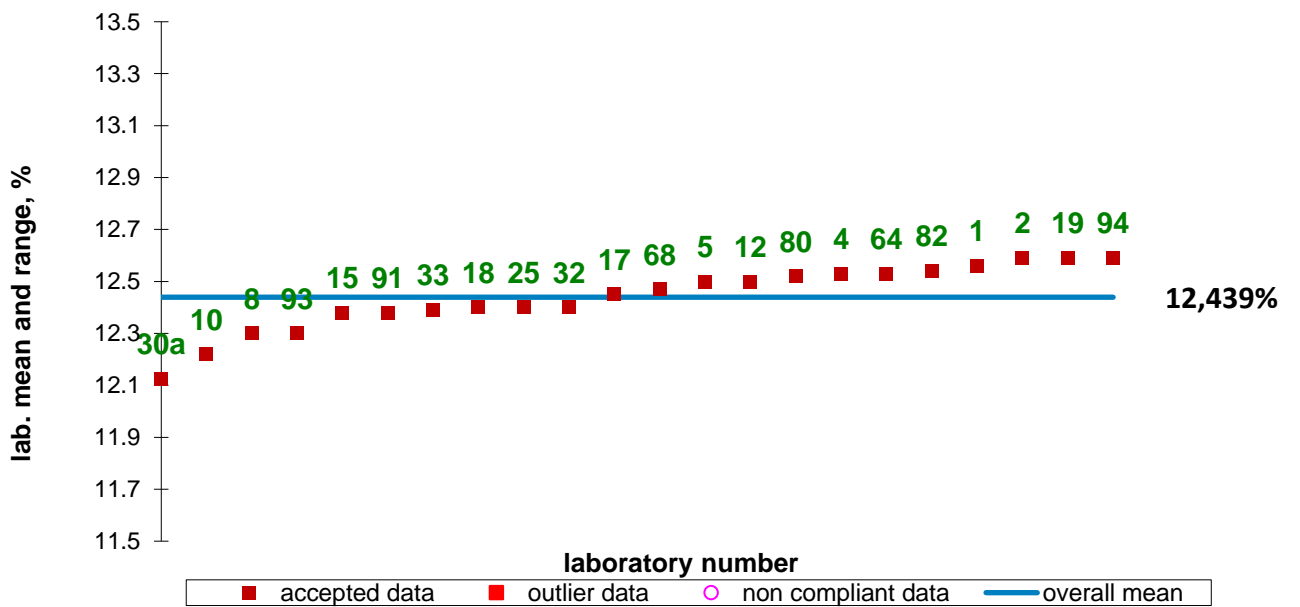
Outliers 30a and 93.

WGN 2022, moisture, sample B3, reference



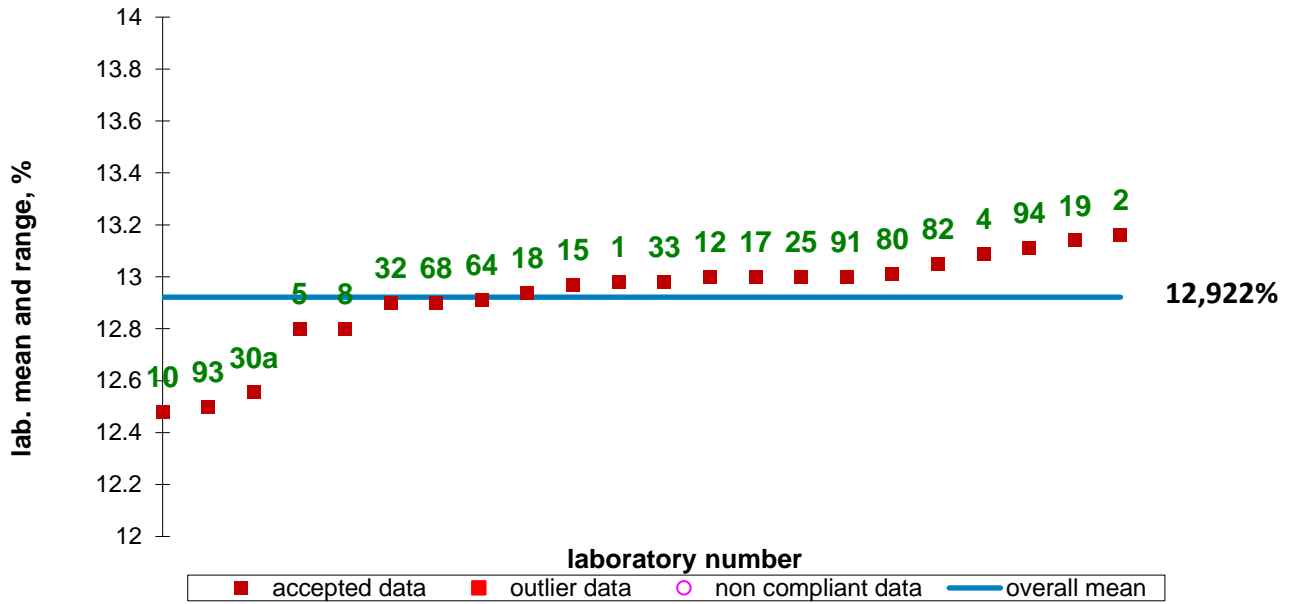
Outlier 30a.

WGN 2022, moisture, sample B4, reference



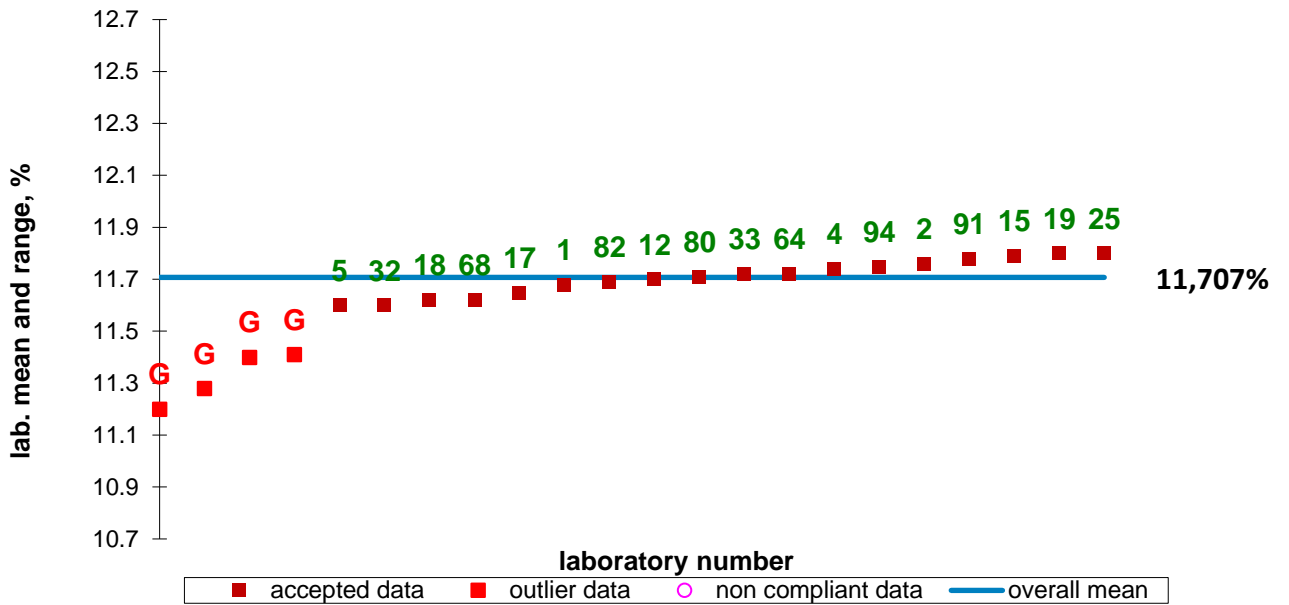
No outliers.

WGN 2022, moisture, sample B5, reference



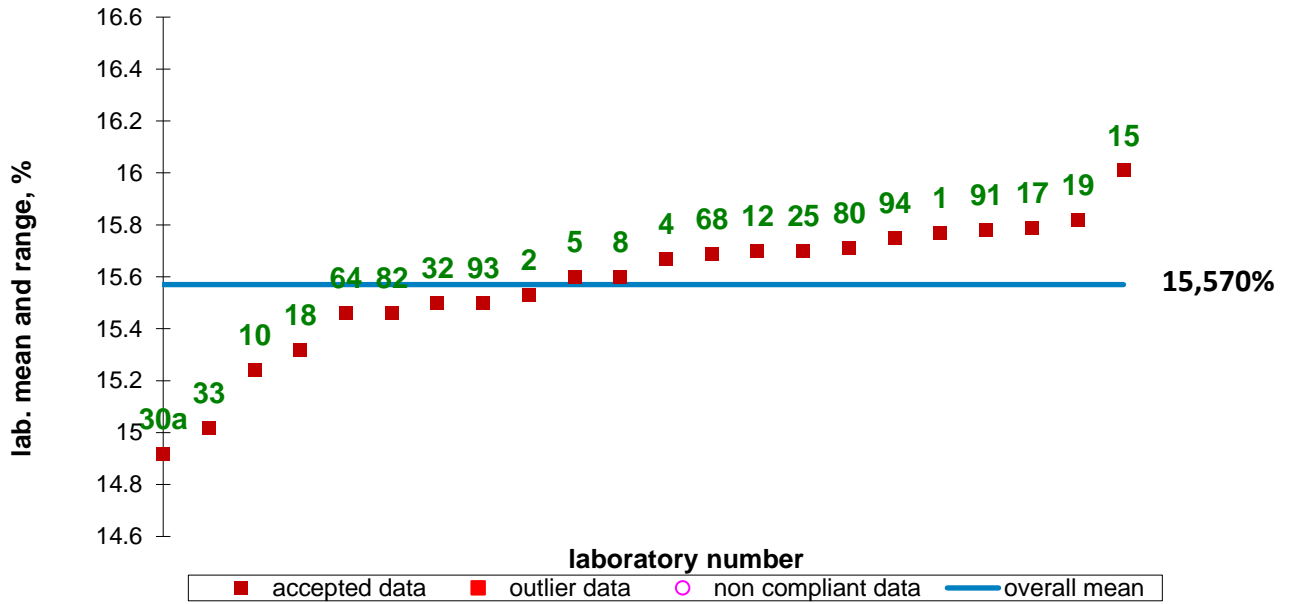
No outliers.

WGN 2022, moisture, sample B6, reference



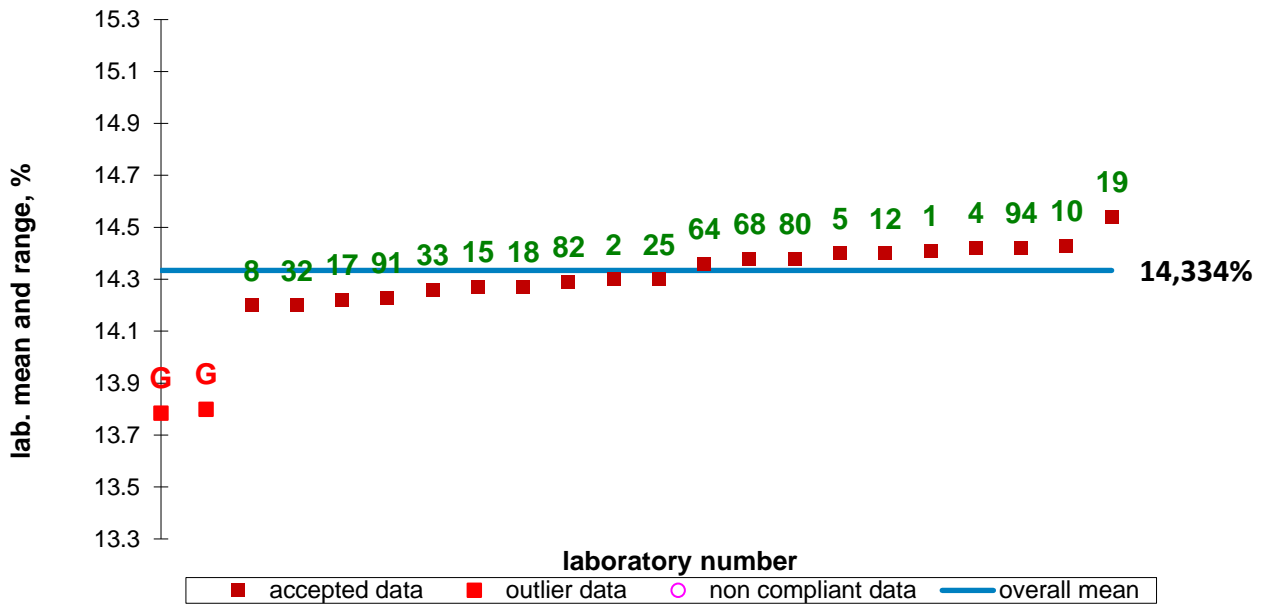
Outliers 8, 10, 30a and 93

WGN 2022, moisture, sample B7, reference



No outliers.

WGN 2022, moisture, sample B8, reference

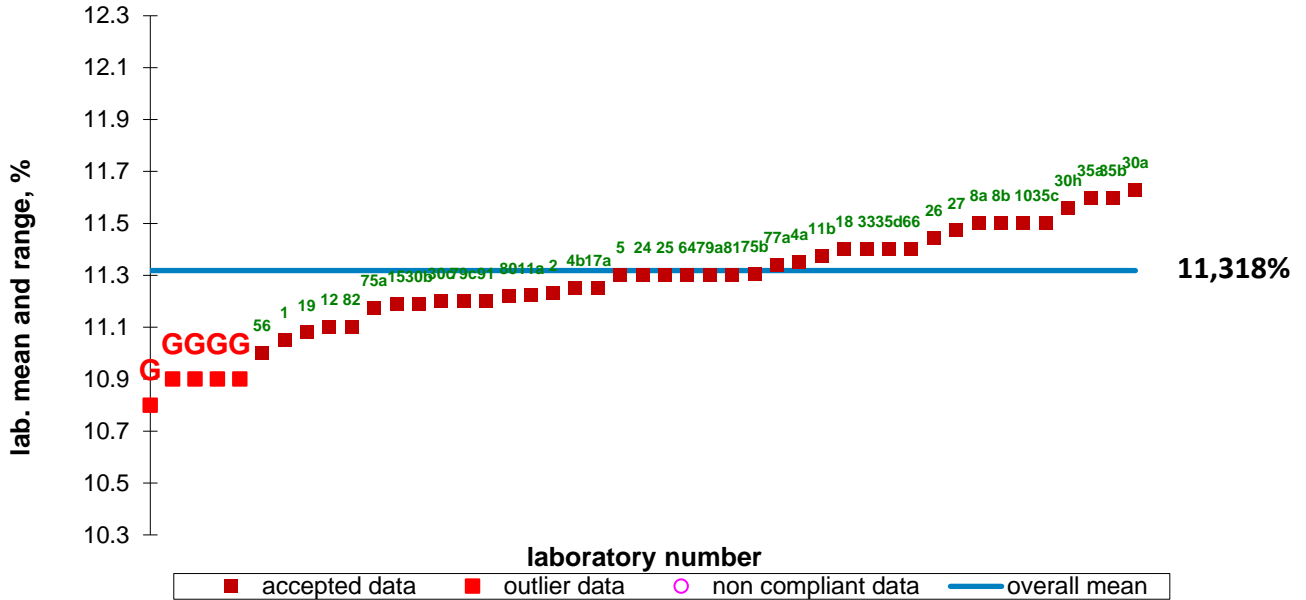


Outliers 30a and 93

4 Protein in Wheat & Barley by local NIR prediction models

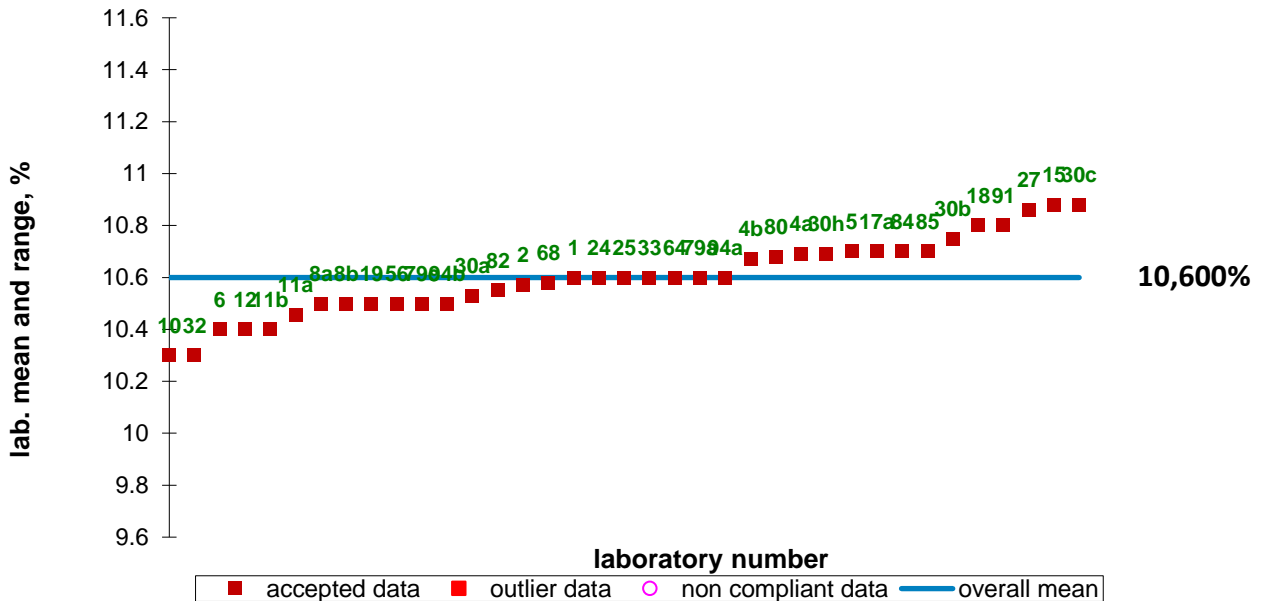
Only two examples are given

WGN 2022, protein, sample W9, local



Outliers 68, 79b, 85, 94a and 94b.

WGN 2022, protein, sample B10, local

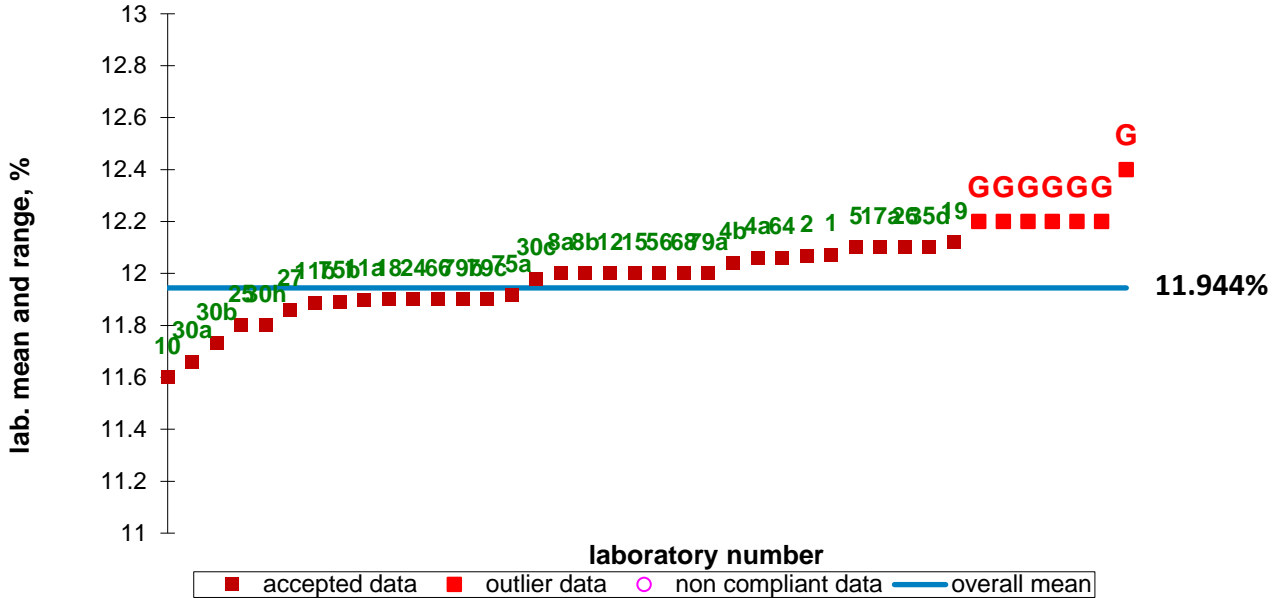


No outliers.

5 Moisture in Wheat & Barley by local NIR prediction models

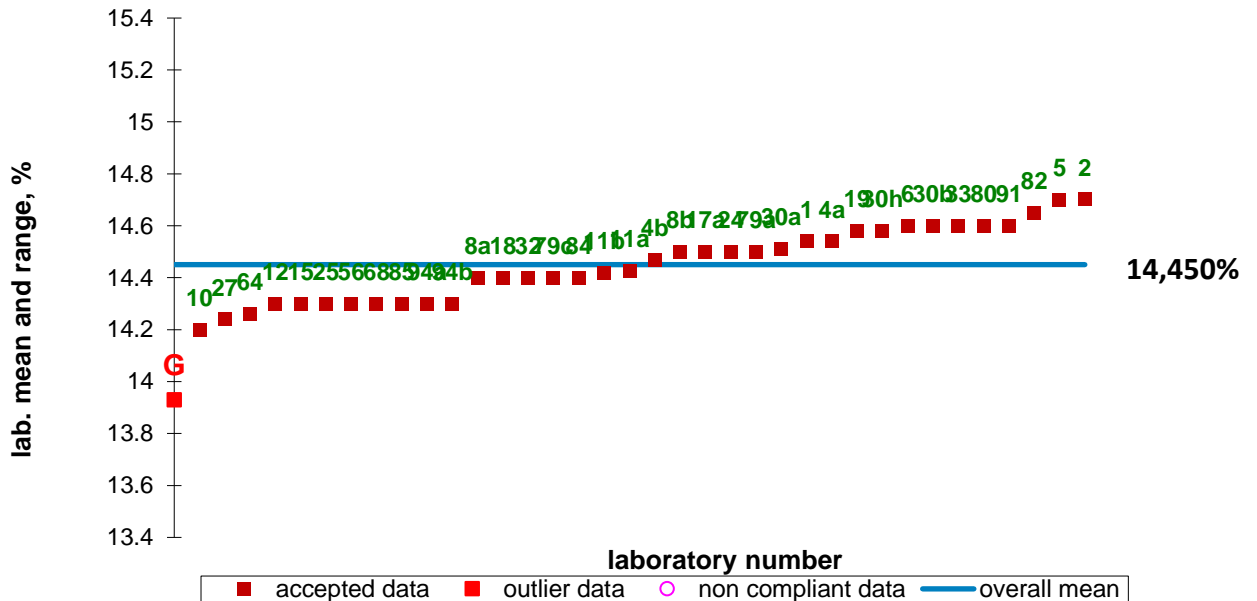
Only two examples are given

WGN 2022, moisture, sample W2, local



Outliers 33, 35a-35c, 77a, 80 and 81.

WGN 2022, moisture, sample B8, local

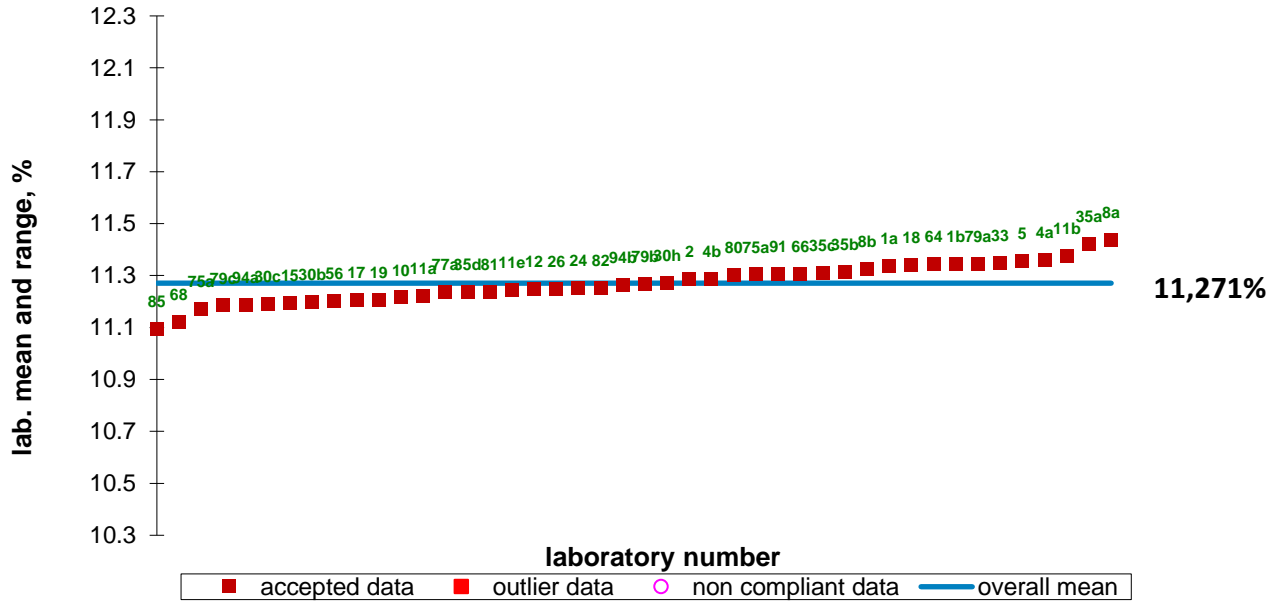


Outlier 30c.

6 Protein in Wheat & Barley by ANN model WB003034

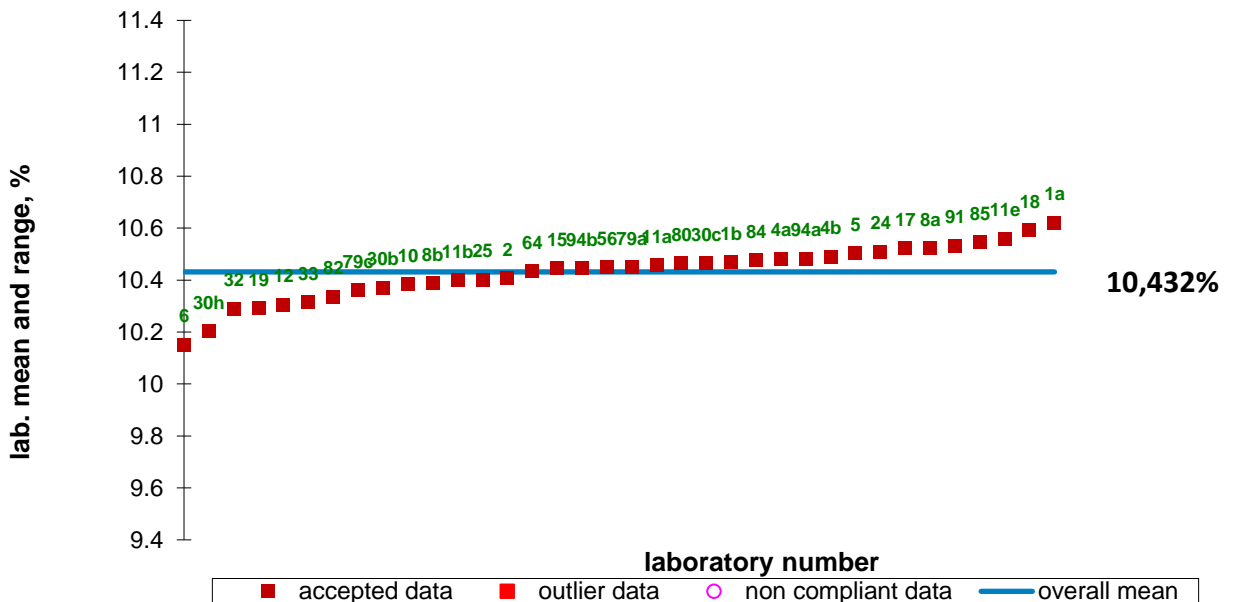
Only two typical examples are given here:

WGN 2022, protein, sample W9, ANN



No outliers.

WGN 2022, protein, sample B10, ANN

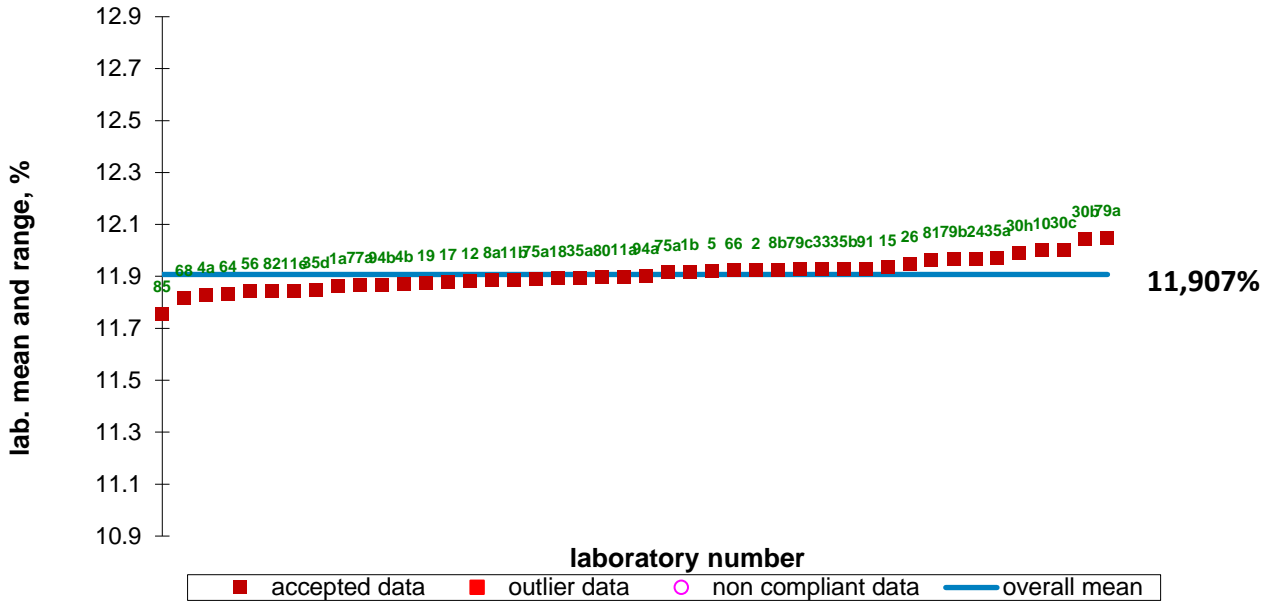


No outliers.

7 Moisture in Wheat & Barley by ANN model WB003034

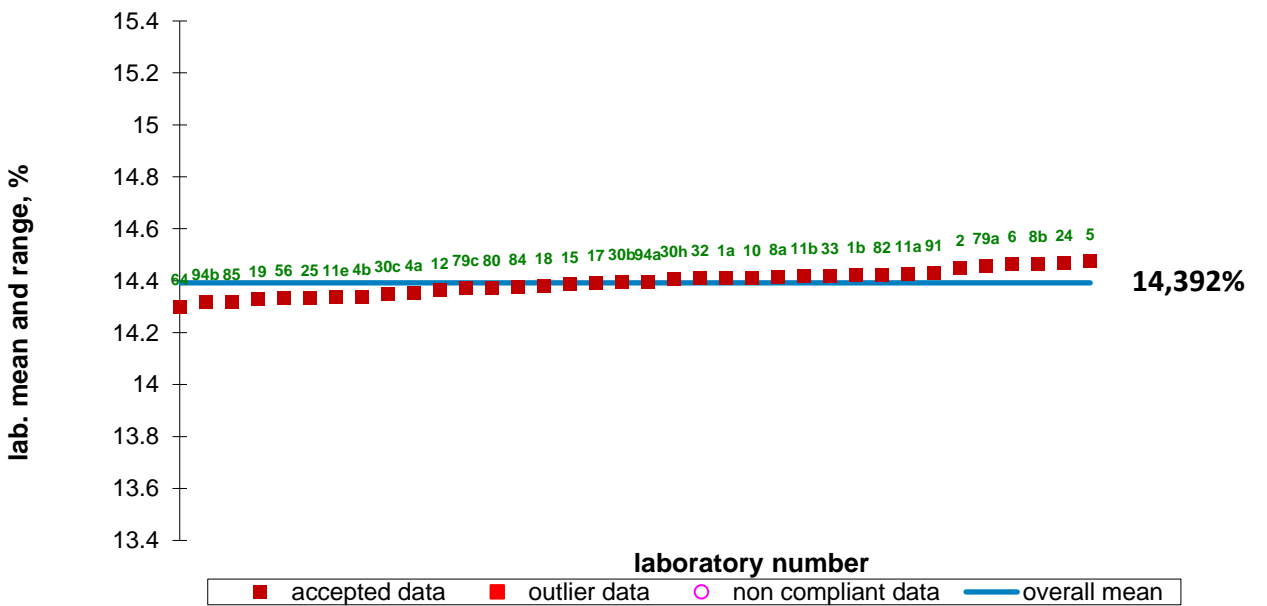
Only two typical examples are given here:

WGN 2022, moisture, sample W2, ANN



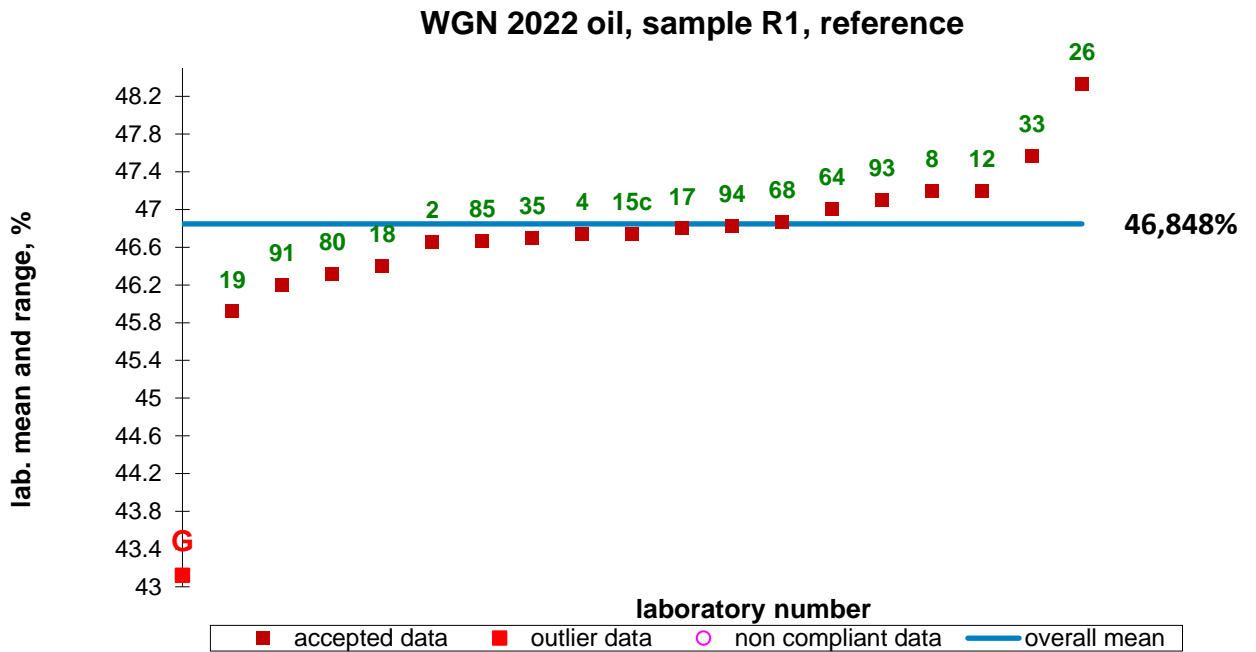
No outliers.

WGN 2022, moisture, sample B8, ANN

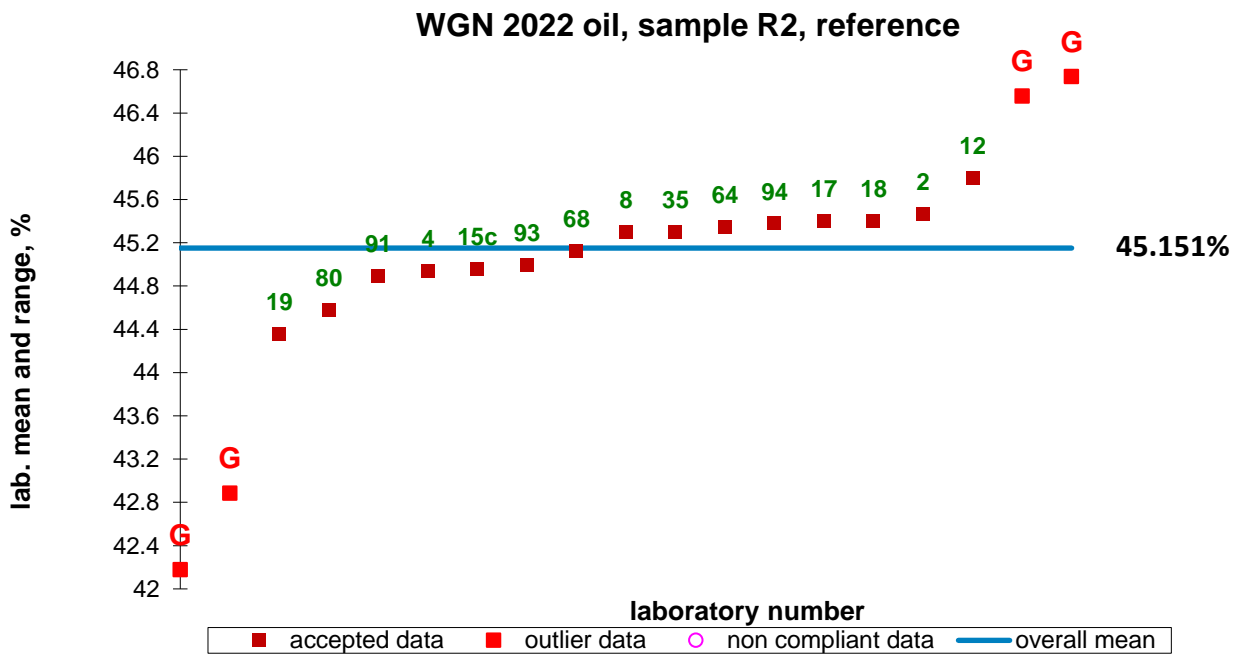


No outliers.

8 Oil in Rapeseed by reference methods

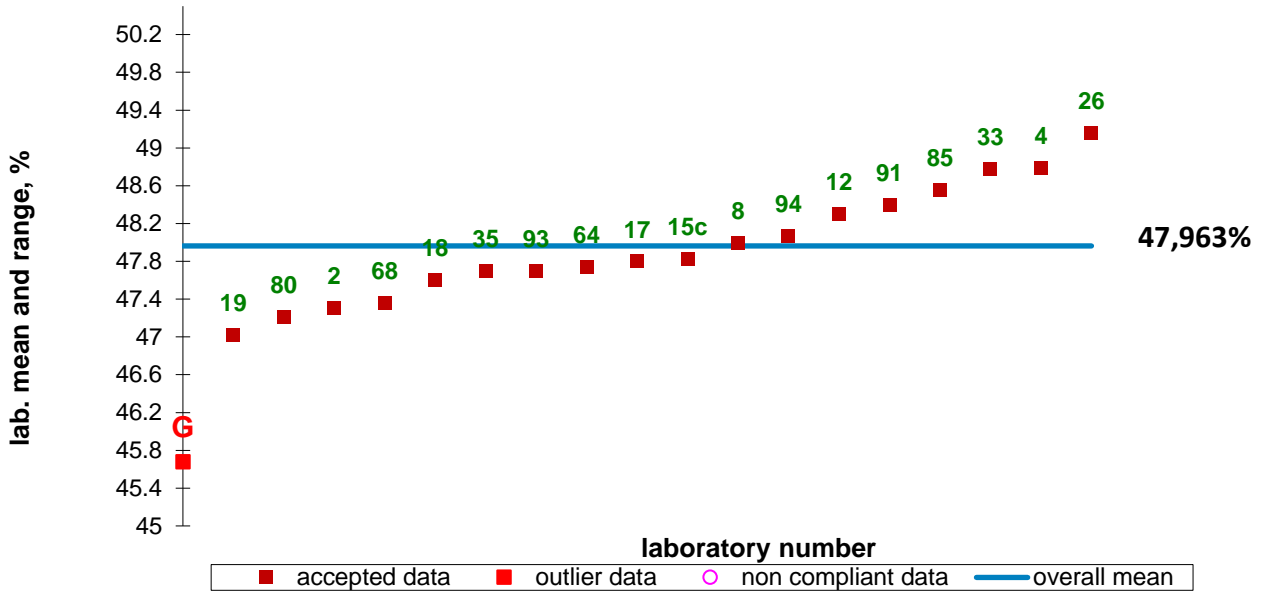


Outlier 30a.



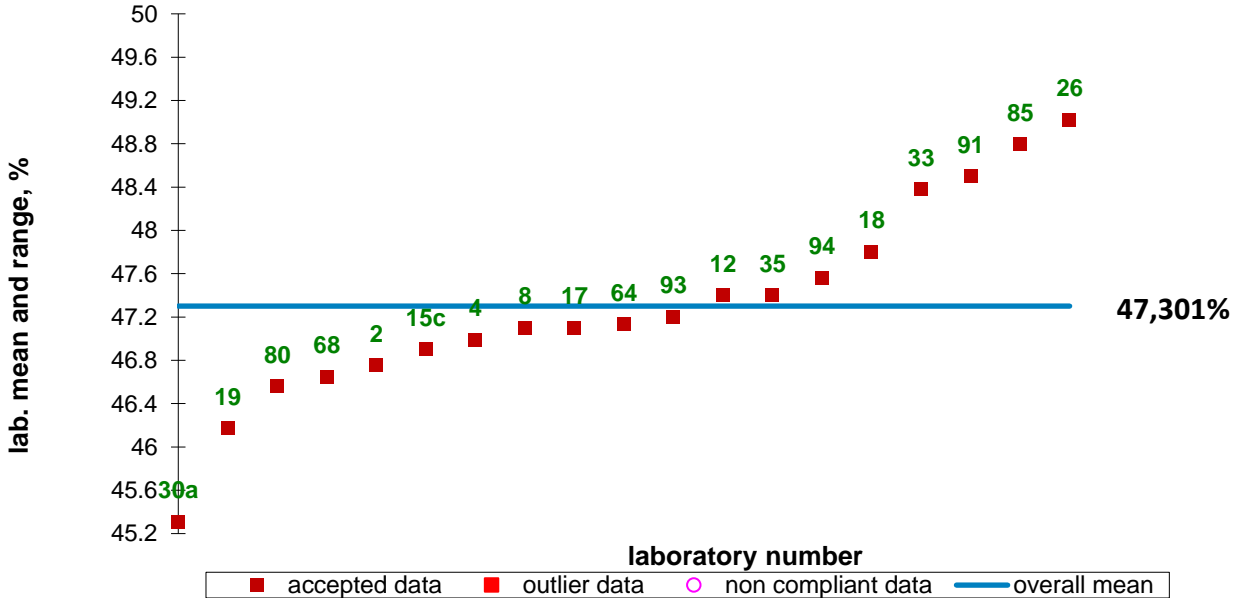
Outliers 26, 30a, 33 and 85.

WGN 2022 oil, sample R3, reference



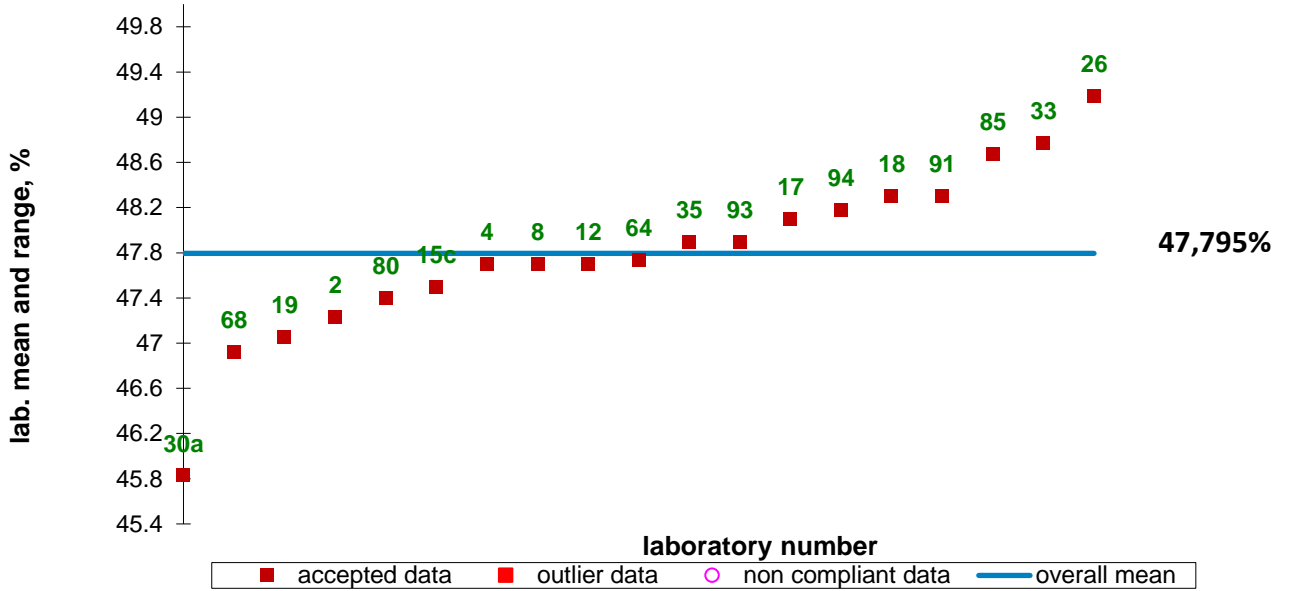
Outlier 30a.

WGN 2022 oil, sample R4, reference



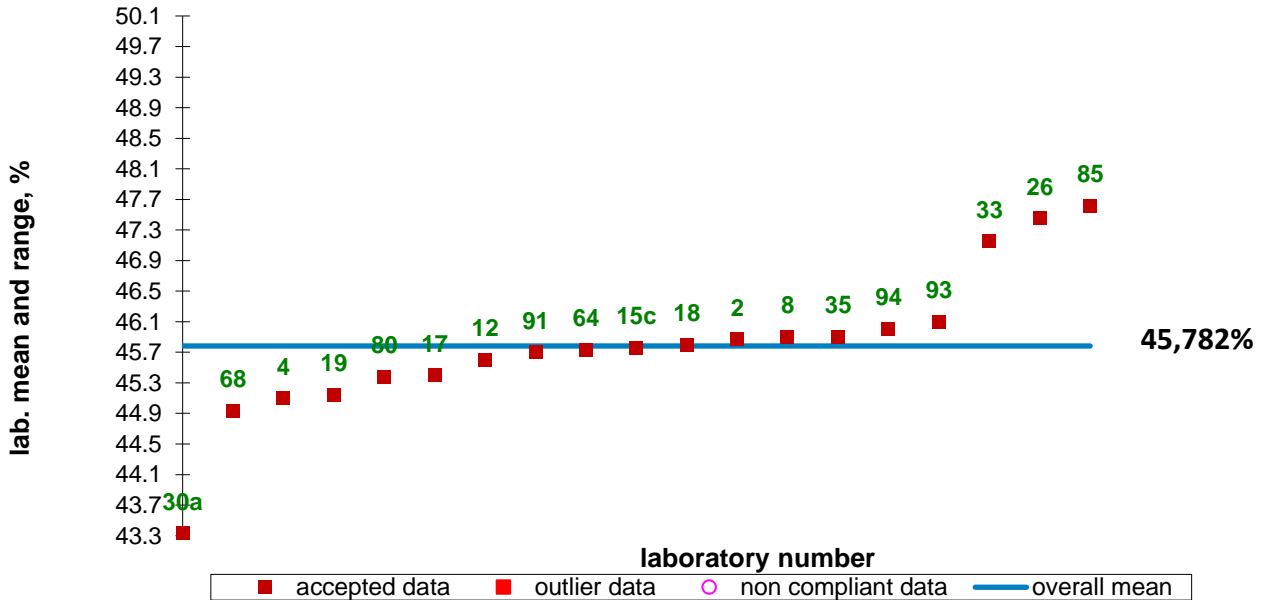
No outliers.

WGN 2022 oil, sample R5, reference



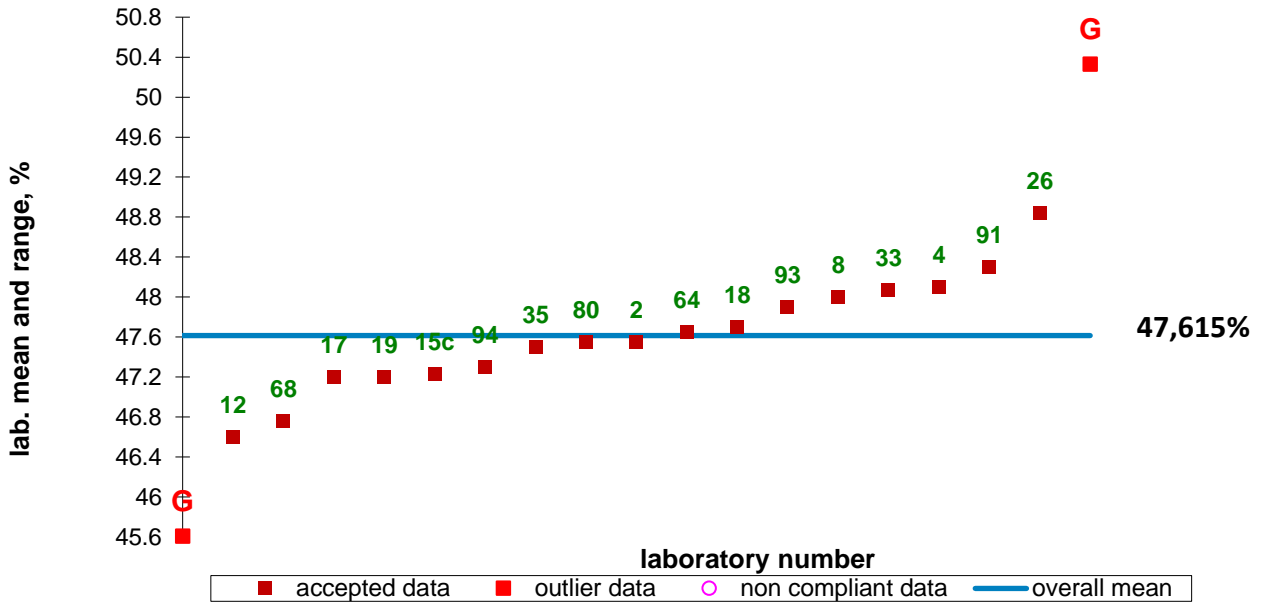
No outliers.

WGN 2022 oil, sample R6, reference



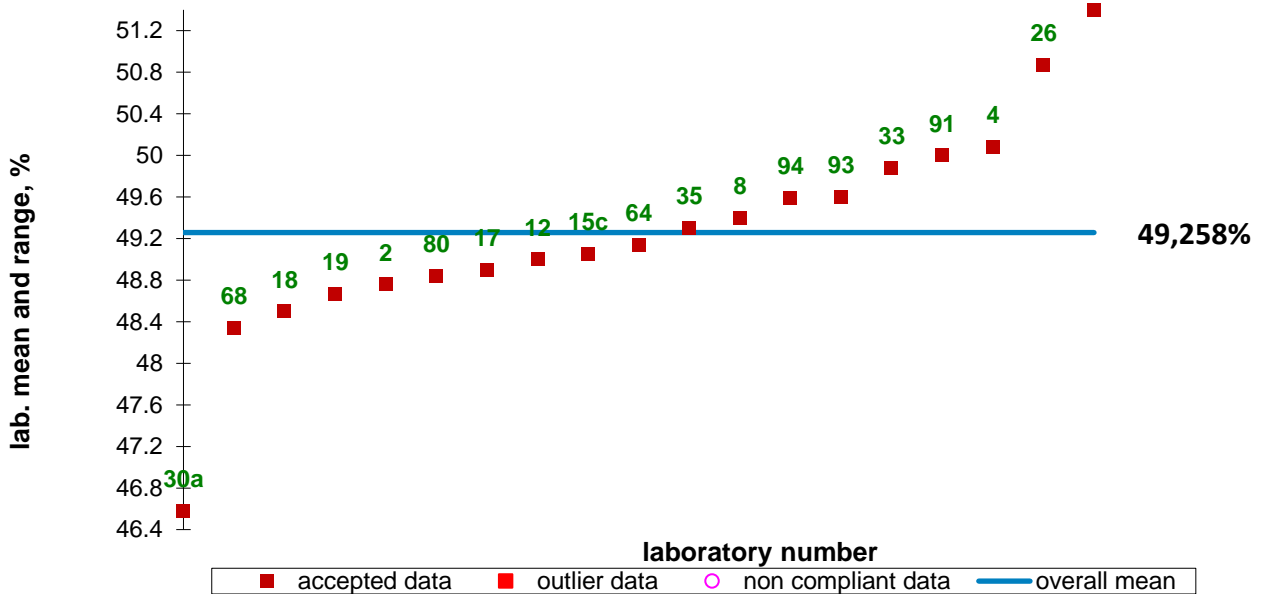
No outliers.

WGN 2022 oil, sample R7, reference

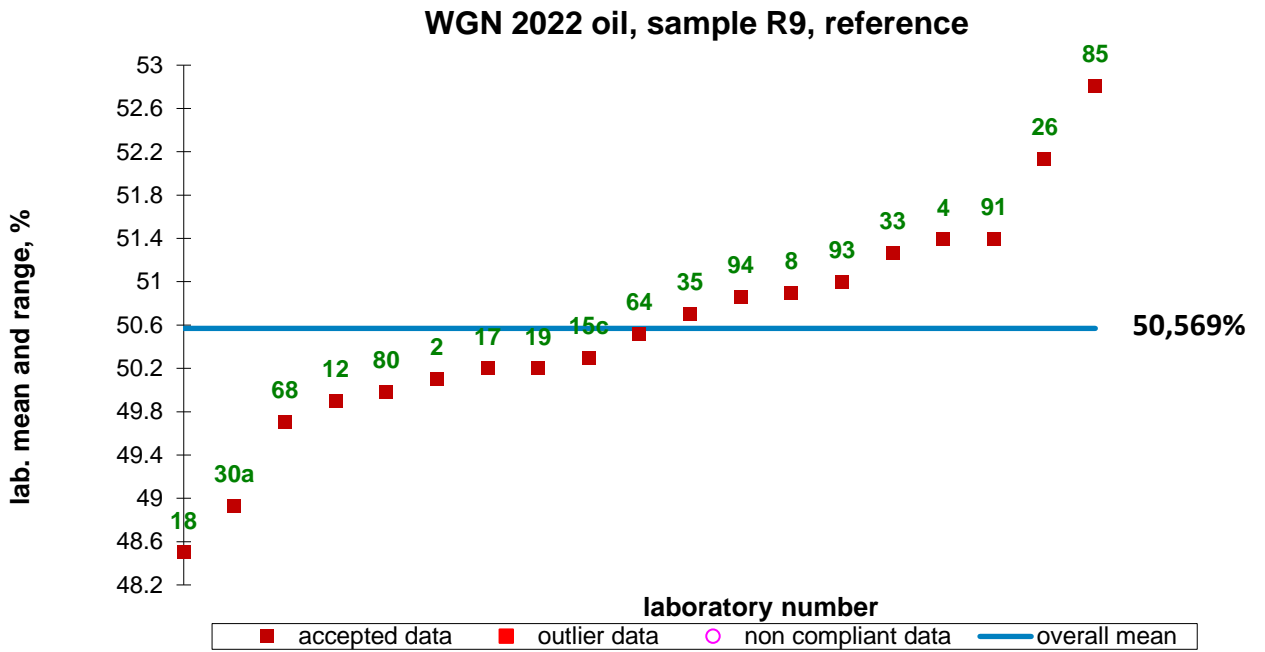


Outliers 30a and 85.

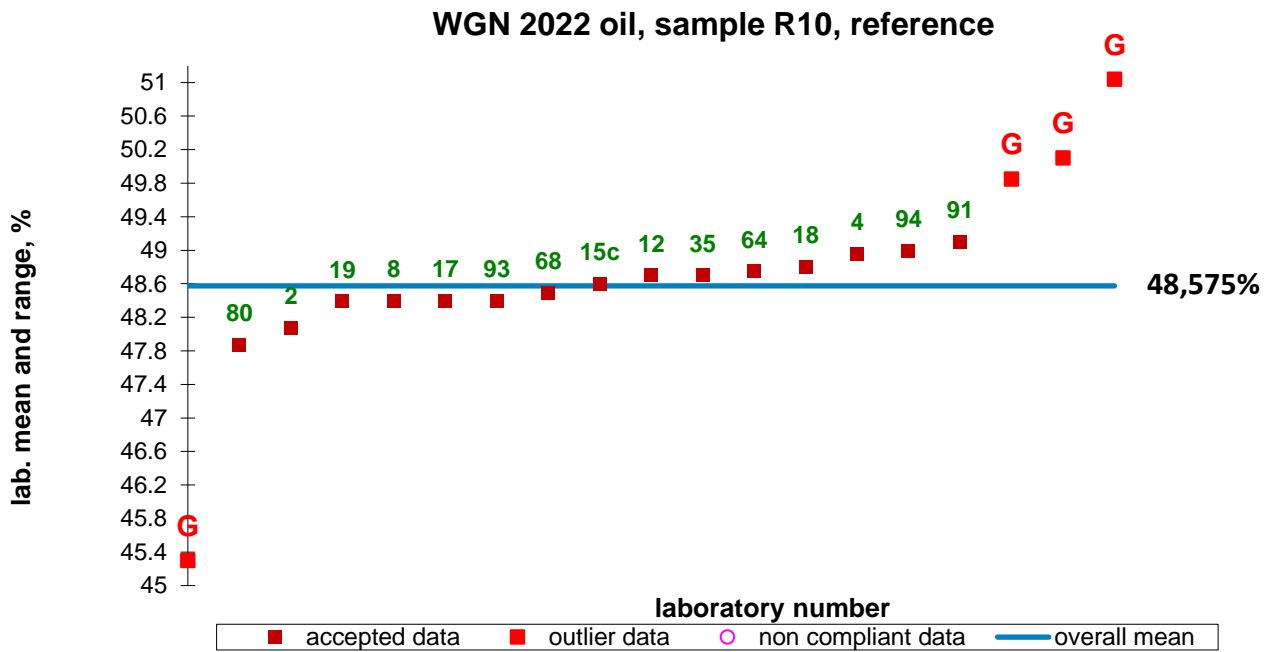
WGN 2022 oil, sample R8, reference



No outliers.

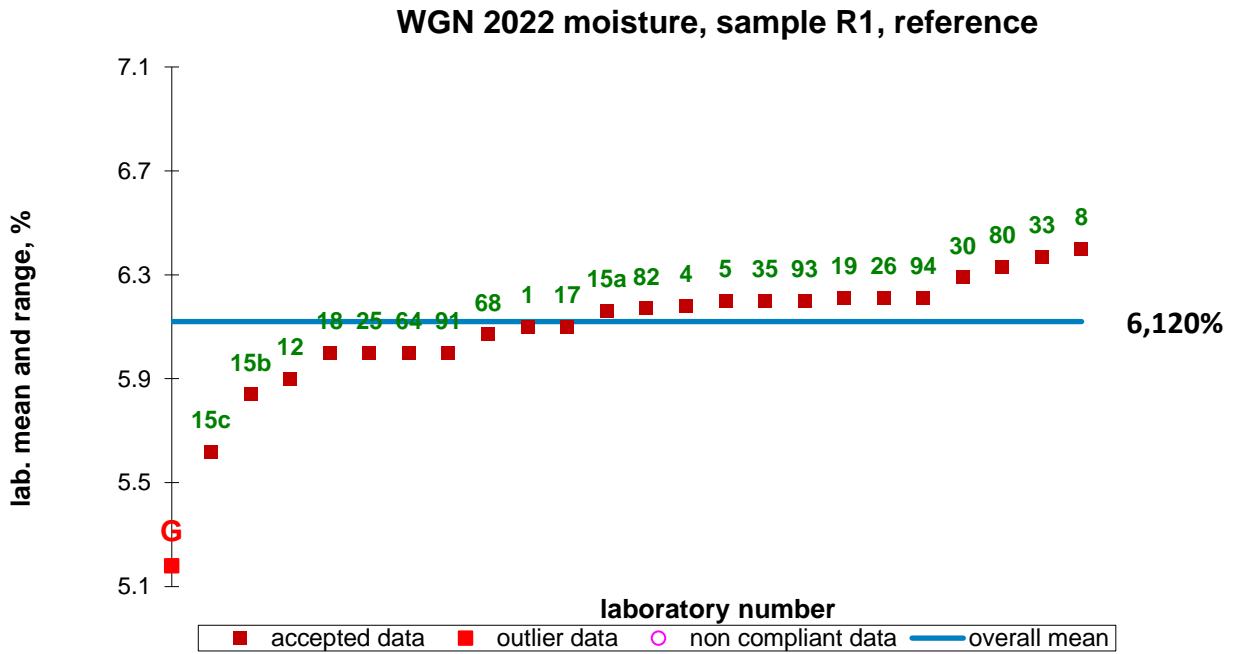


No outliers.

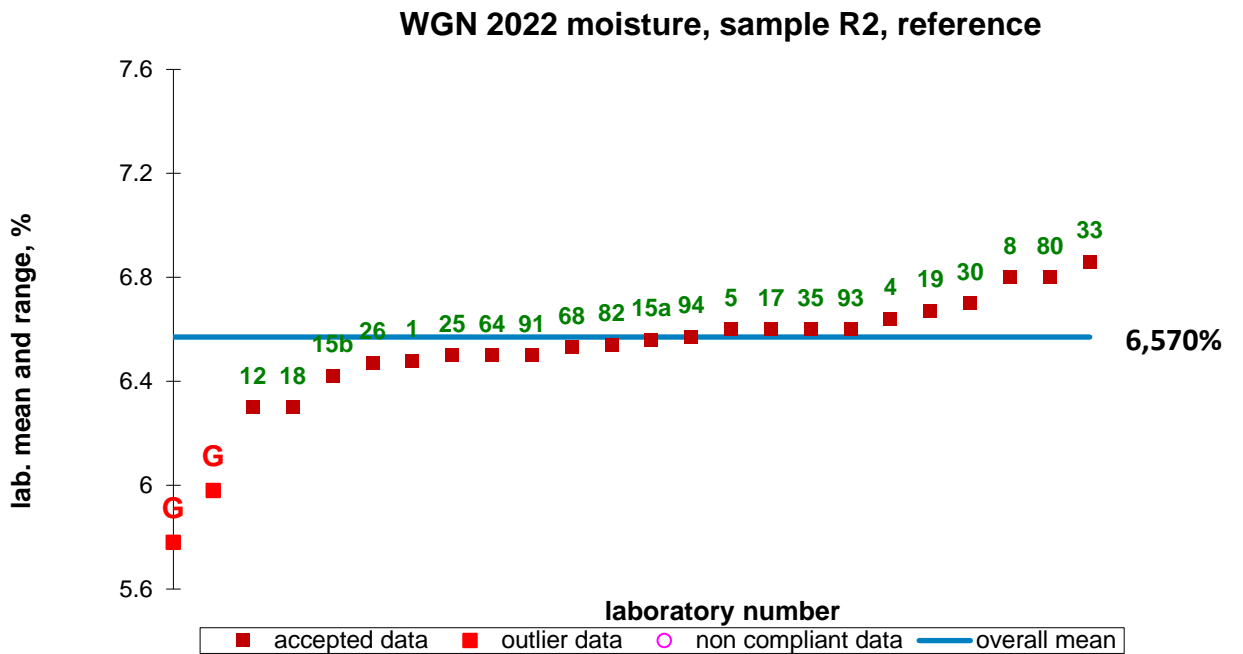


Outliers 26, 30a, 33 and 85.

9 Moisture in Rapeseed by reference methods

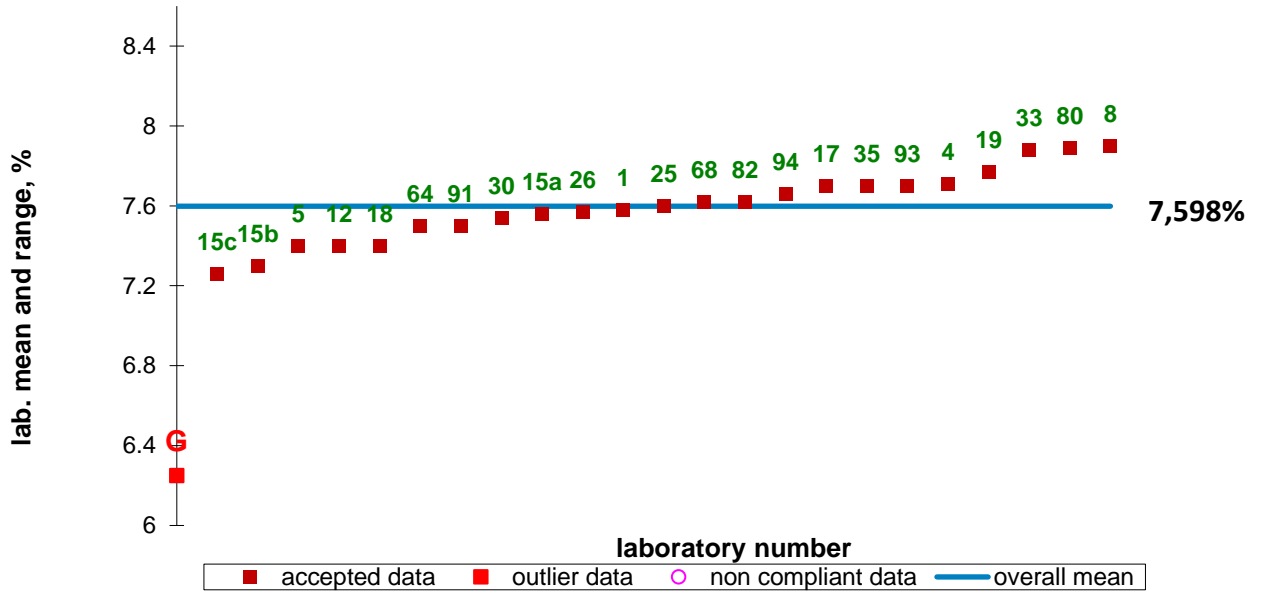


Outlier 2.



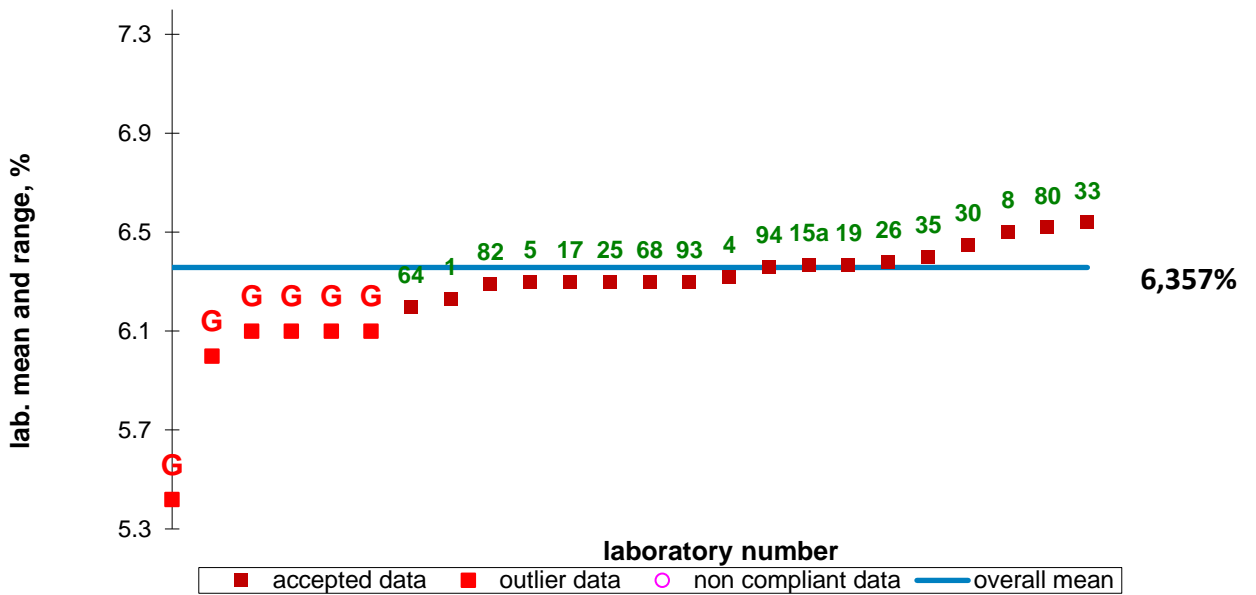
Outliers 2 and 15c.

WGN 2022 moisture, sample R3, reference



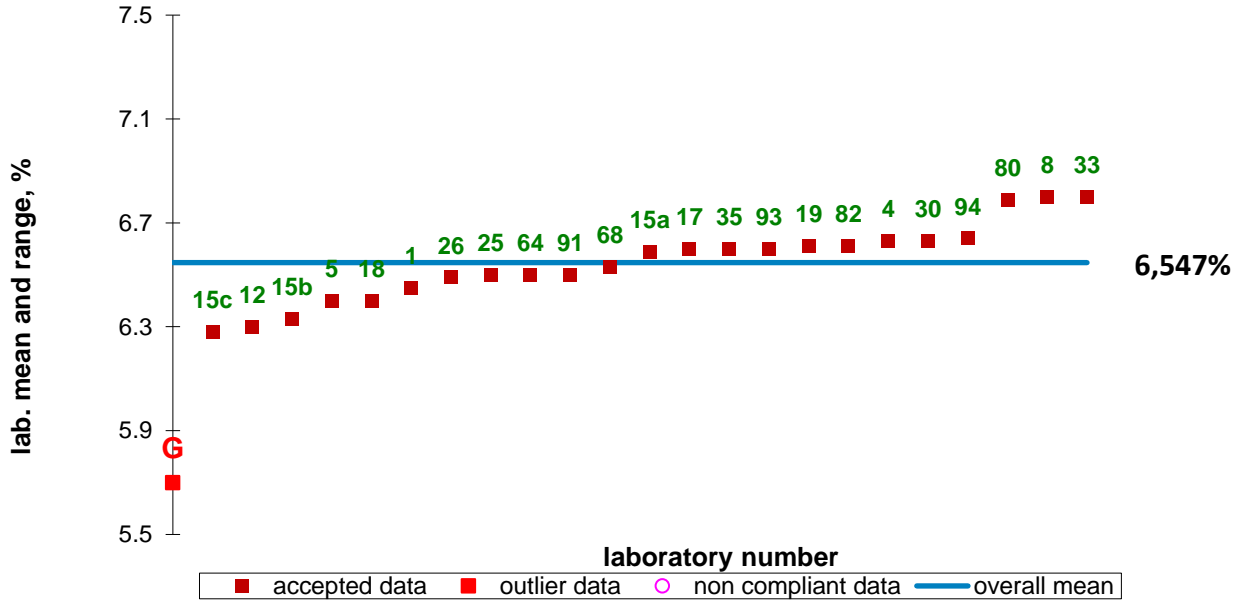
Outlier 2.

WGN 2022 moisture, sample R4, reference



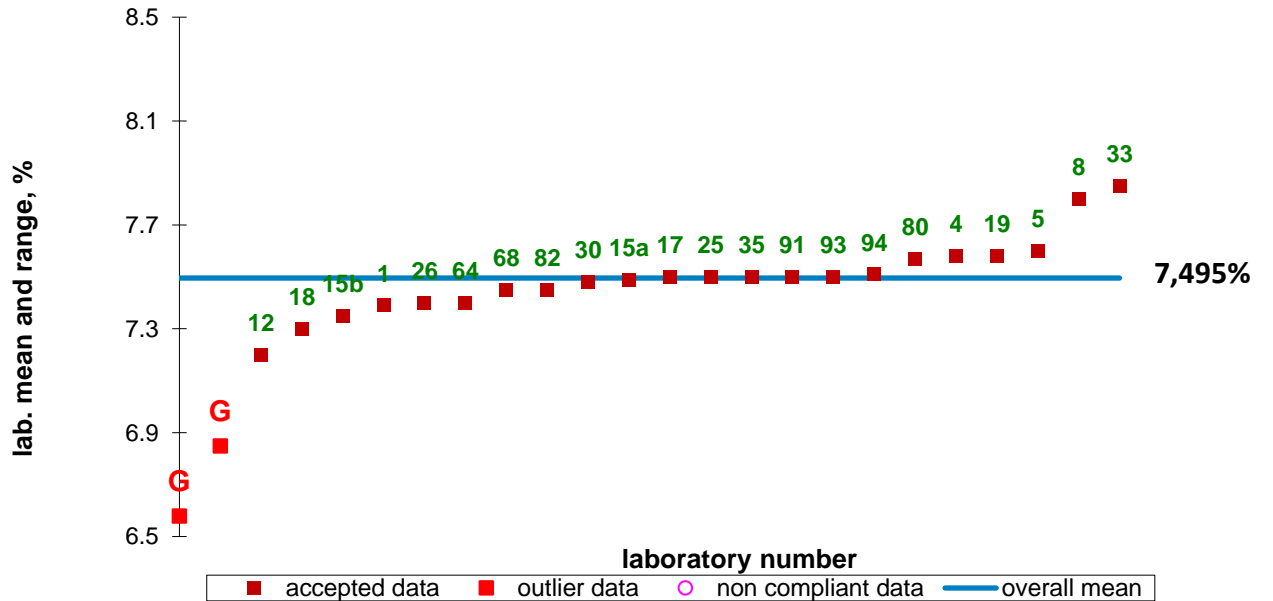
Outliers 2, 12, 15b, 15c, 18 and 91.

WGN 2022 moisture, sample R5, reference



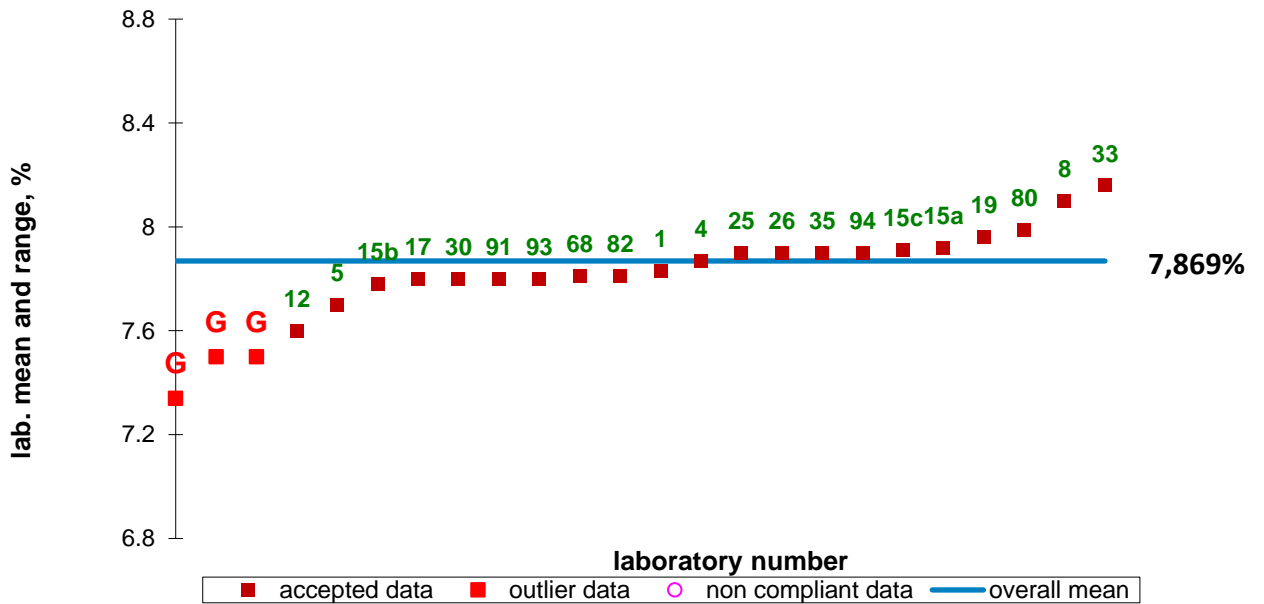
Outlier 2.

WGN 2022 moisture, sample R6, reference



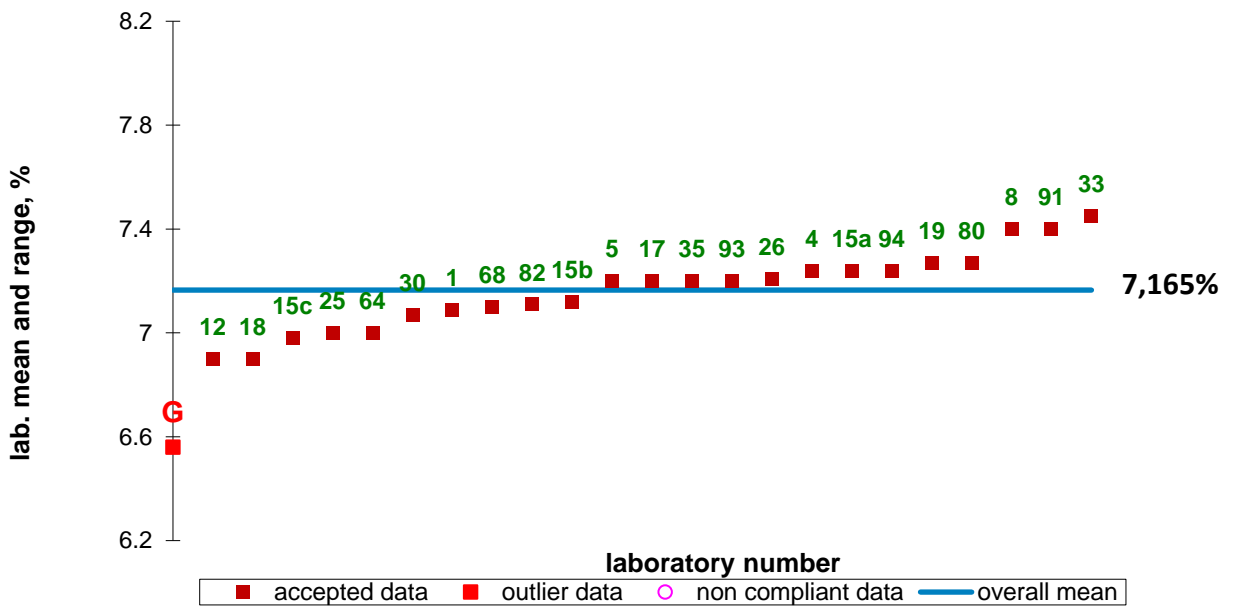
Outliers 2 and 15c.

WGN 2022 moisture, sample R7, reference



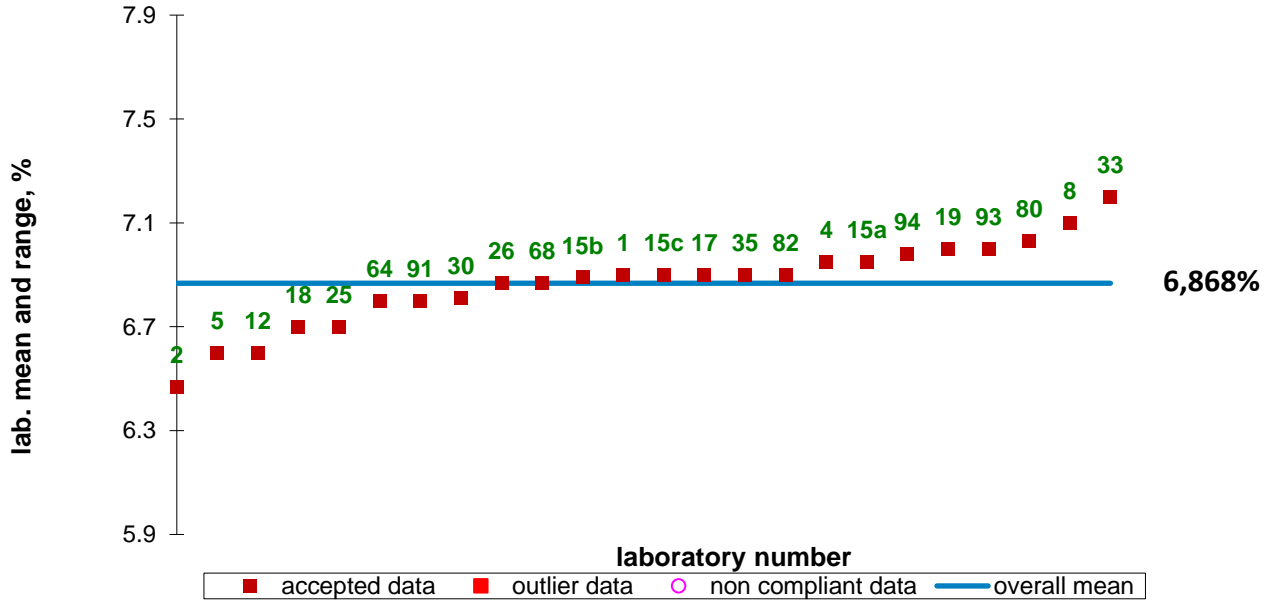
Outliers 2, 18 and 64.

WGN 2022 moisture, sample R8, reference



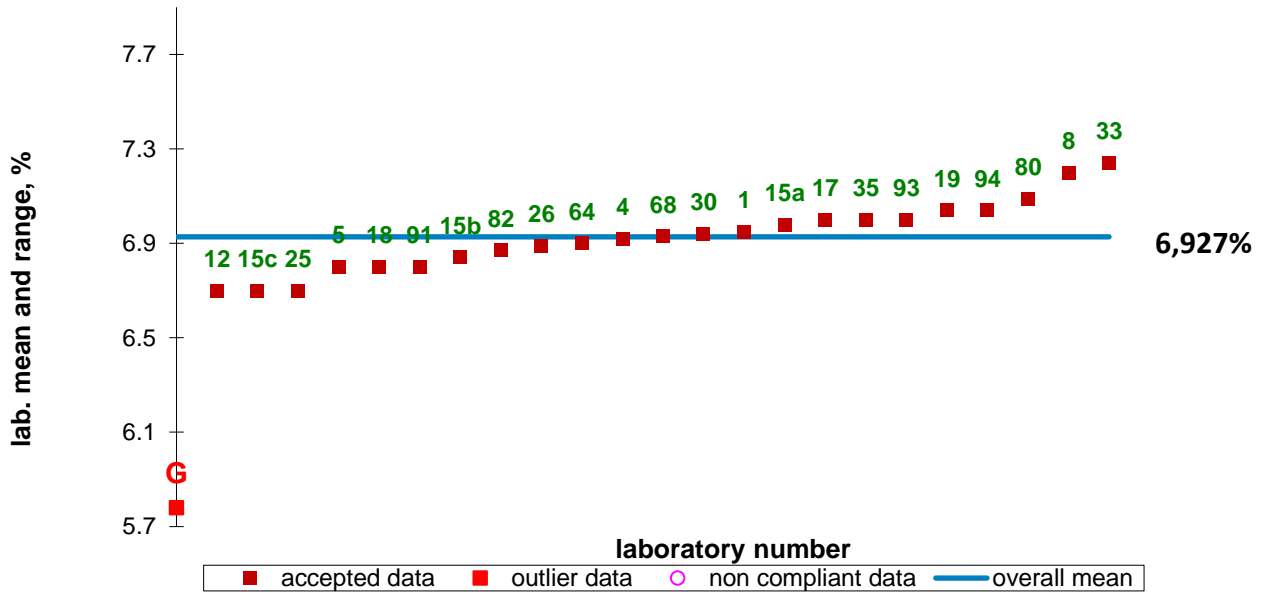
Outlier 2.

WGN 2022 moisture, sample R9, reference



No outliers.

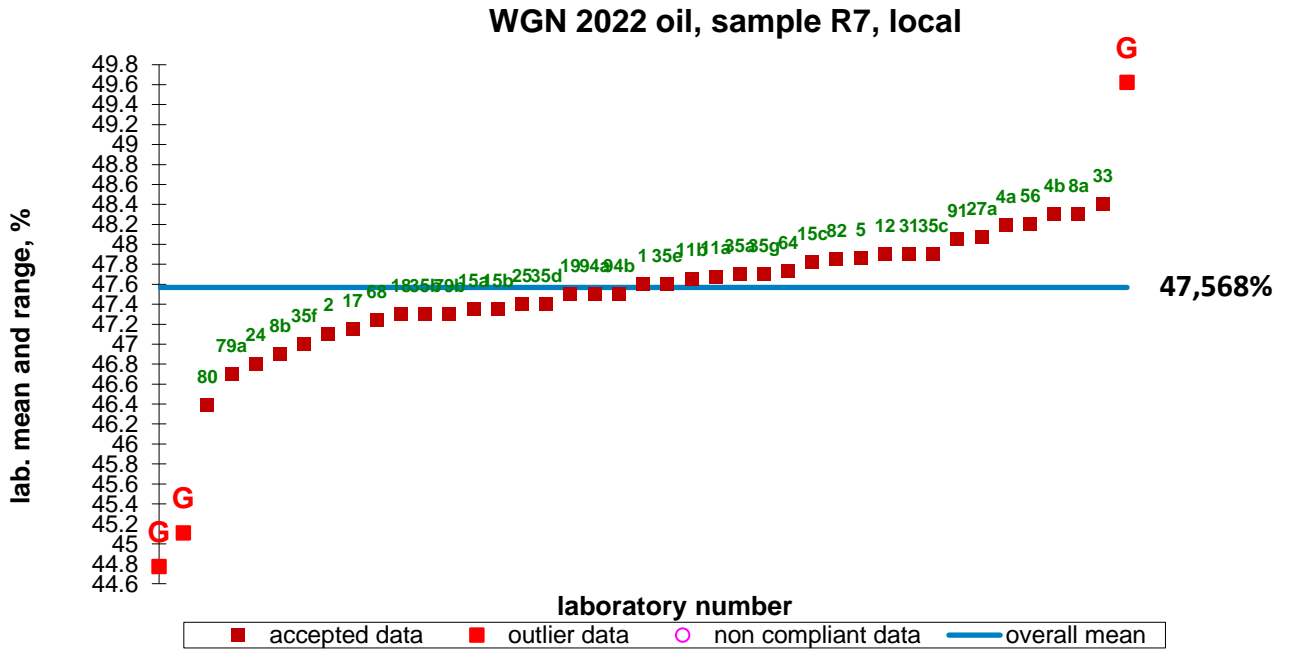
WGN 2022 moisture, sample R10, reference



Outlier 2.

10 Oil in Rapeseed by local NIR prediction models

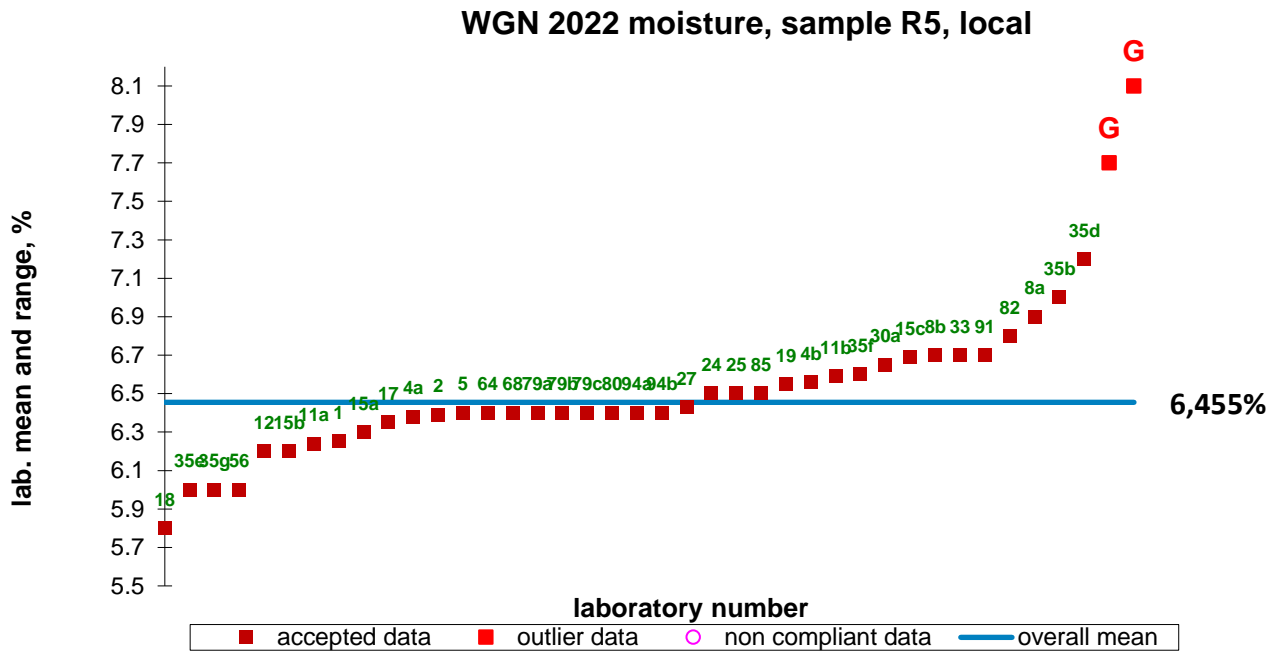
Only one typical example is given



Outliers 30a, 79c and 85.

11 Moisture in Rapeseed by local NIR prediction models

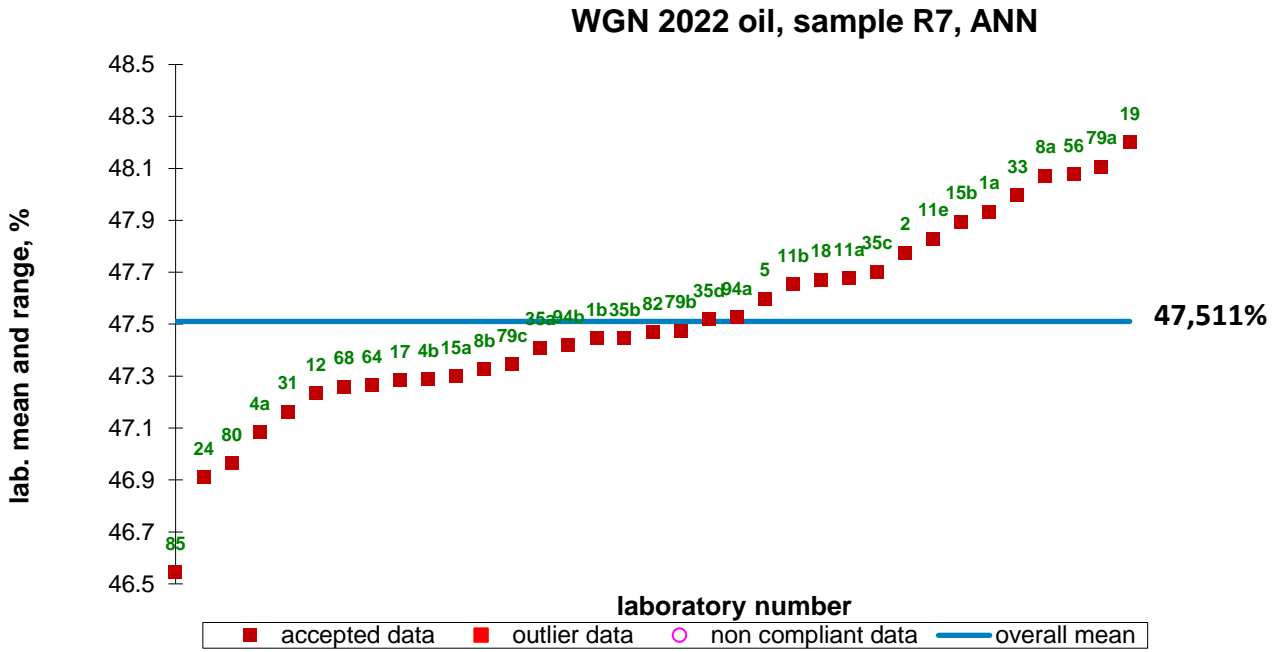
Only one typical example is given



Outlier 35a and 35c.

12 Oil in Rapeseed by ANN model RAOI0035

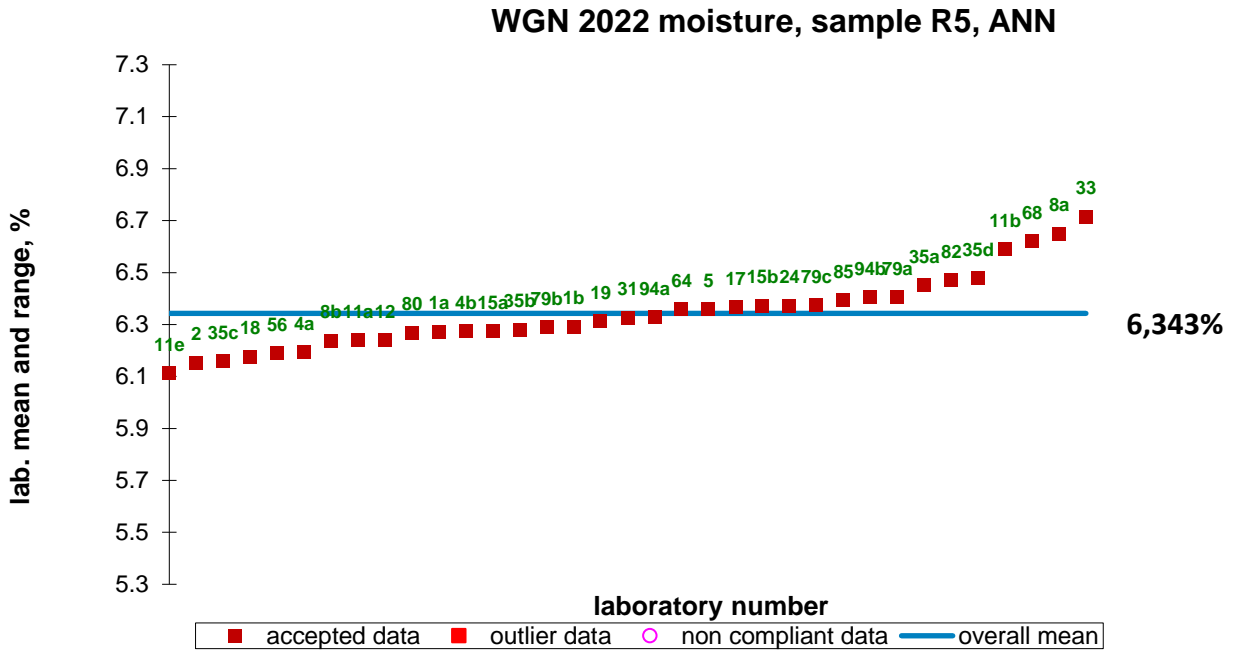
Only one typical example is given here:



No outliers.

13 Moisture in Rapeseed by ANN model RAMO0026

Only one typical example is given here:



No outliers.